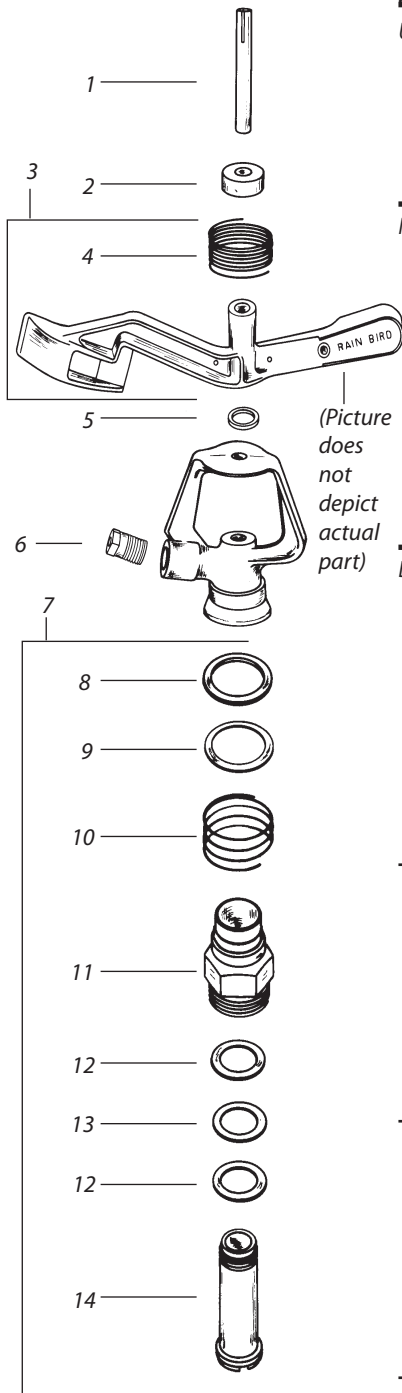


14DH / 14D TNT / 14G TNT / 14JH / 20-14H / 20-14H-PM / 20C TNT  
20EC TNT / 20JH / 20EJH / 20 ADJ(B) / 20 ADJ-B / 20L



Ref.	Part Description	14 DH		14JH		20C TNT	20EC TNT	20ADJ
		14D TNT	14G TNT	20-14 H	20-14H-PM	20 EIH	20 ADJ-B	20 L(A)
<b>UPPER ASSEMBLY</b>								
1	Fulcrum Pin	100793	100793	100793	100793	100793	100793	100793
2	Arm Hood	100775	100775	100775	100775	100775	-	-
3	Arm Spring Assembly	102251	(102250)	113717	113717	(B) 114783	(104984)	102259
4	Arm Spring	100172	100172	100172	100172	100133	106330	100133
5	Arm Washer	-	100173	100173	100173	-	-	-
<b>NOZZLES (Specify nozzle size when ordering)</b>								
6	Straight Bore	105780	105780	105780	105780	105780	-	(101074)
-	Off Axis 15 Degree	103513	-	-	-	-	-	-
-	Low Pressure 0 Degree	104571	-	104571	104571	104571	-	-
-	Low Pressure 3 Degree	104572	-	-	104572	104572	-	-
-	Rain Flow	111088	-	111088	111088	111088	-	-
-	Nozzle & Vane Assembly	-	-	-	-	(C) 106160	101092	101092
-	Nozzle	-	-	-	-	105780	(100202)	(100202)
-	Vane	-	-	-	-	101618	101618	101618
-	Adjustment Screw	-	-	-	-	-	100136	100136
-	Spring	-	-	-	-	-	100203	100203
<b>BEARING ASSEMBLY</b>								
7	Bearing Assembly (Current Style)	104792	-	104695	104792	104695	109220	109220
8	Top Seal Washer (White)	100279	-	100279	100279	100279	-	-
9	Metal Top Seal Washer	100280	-	100280	100280	100280	-	-
10	Bearing Spring	105431	-	105431	105431	105431	-	-
11	Bearing Sleeve (Brass)	-	-	104153	-	104153	(104983)	(104983)
11	Bearing Sleeve (Plastic)	(104631)	-	-	(104631)	-	-	-
12	Bearing Washer (2) (Black)	104181	-	104181	104181	104181	-	-
13	Wear Washer (White)	104696	-	104696	104696	104696	100132	100132
14	Bearing Nipple	102020	-	102020	102020	102020	104982	104982
<b>7 Bearing Assembly (Old TNT Style)</b>								
10	Bearing Spring	100182	100182	-	-	100182	-	100182
8	Skirted Top Seal Whr (Black)	100180	100180	-	-	100180	-	100180
9	Top Seal Washer (White)	100181	100181	-	-	100181	-	100181
11	Bearing Sleeve	(D)	(E)	-	-	(E)	-	(E)
12	Wear Ring (T-Ring) (Wht)	(100177)	100586	-	-	100586	-	100586
13	Bearing Washer (Black)	104181	104181	-	-	104181	-	104181
14	Bearing Nipple	100178	100178	-	-	100178	-	100178
<b>7 Bearing Assembly (TNT Replacement)</b>								
10	Bearing Spring	-	100182	-	-	100182	-	100182
8	Skirted Top Seal Whr (Black)	-	100180	-	-	100180	-	100180
9	Top Seal Washer (White)	-	100181	-	-	100181	-	100181
11	Bearing Sleeve	-	(E)	-	-	(E)	-	(E)
12	Bearing Washer (2) (Black)	-	104181	-	-	104181	-	104181
13	Wear Washer (White)	-	104696	-	-	104696	-	104696
14	Bearing Nipple	-	100178	-	-	100178	-	100178

- (A) 20L Nozzle no longer available use #101092.
- (B) 20C/20EC arm not available. No Replacement.
- (C) Used on 20EC and 20EJH.
- (D) Not available. No replacement.
- (E) Bearing sleeve not available. Use 110950 Bearing Assembly.

Note: Part numbers enclosed in brackets ( ) are not available individually, but may be sold in assemblies or kits.