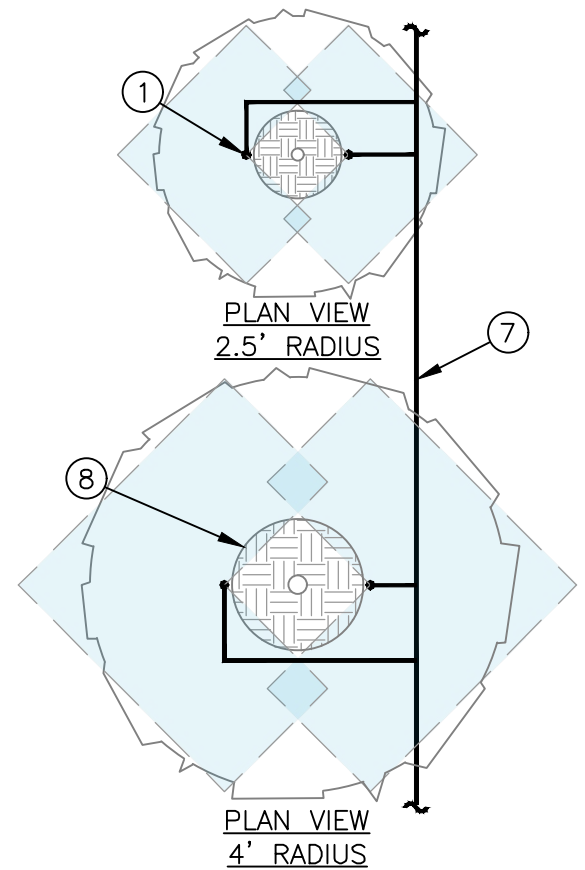
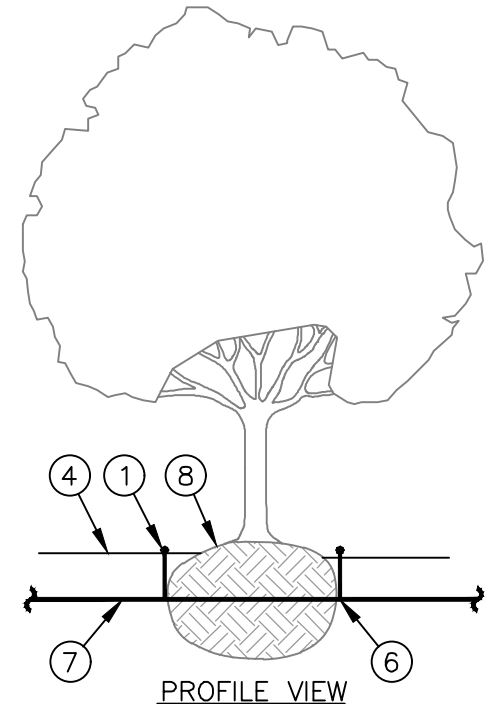


- ① LOW VOLUME SPRAY NOZZLE:
RAIN BIRD 3QTR SQ NOZZLE
- ② POLYFLEX RISER ADAPTER:
RAIN BIRD SQ ADP
- ③ TOP OF MULCH
- ④ FINISH GRADE
- ⑤ POLYFLEX RISER AND ADAPTER
ASSEMBLY RAIN BIRD PFR-FRA
- ⑥ PVC SCH 40 TEE OR ELL
- ⑦ PVC LATERAL PIPE
- ⑧ PLANT ROOT BALL



NOTES:

1. INSTALL LOW VOLUME SPRAY NOZZLES AT THE ROOTBALL EDGE SPRAYING OUTWARD ON OPPOSITE SIDES OF TRUNK TO PROVIDE COVERAGE UNDER PLANT CANOPY.
2. THE NOZZLE RADIUS CAN BE ADJUSTED FROM 2.5' TO 4' BY TURNING THE NOZZLE.



3QTR SQ NOZZLE WITH ADAPTER ON POLYFLEX RISER INTO PVC TEE

N.T.S.

OPTION 1A

D