

Horizontal End Suction - LP Series

Low Profile Pump Station

5 to 10 HP; Up to 100 psi (6.9 bar); Up to 200 gpm (12.6 lps, 45.4 m³/h)

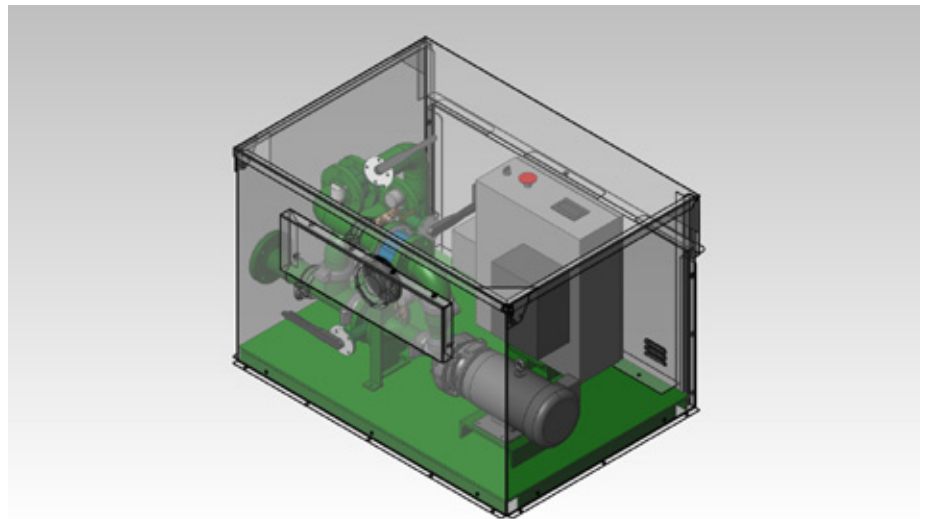
Rain Bird's LP Series Horizontal End Suction pump stations are designed for small to midsize boost, flooded suction and suction lift applications such as city parks and buildings, sports fields, commercial buildings, small home owner's associations and large residential sites. Its low profile design, and durable centrifugal pump configuration make it an ideal choice for Turf irrigation applications with flows up to 200 gpm (12.6 lps, 45.4 m³/h).

At-A-Glance Description

- **Cost effective** – Standardized VFD driven pump system in enclosure delivers high performance with minimum investment.
- **Low Profile** – Compact aluminum enclosure with powder coated skid and piping.
- **Energy efficient** – Variable Frequency Drive (VFD) maintains constant pressure at varying flow demand.
- **Reliability** – Simple, standard design, easy installation and maintenance.

Standard Features

- **Plumbing Configurations**
 - 3" Inlet and Discharge Piping (on the side of the enclosure as shown)
 - Integrated pump bypass
- **Mechanical Features**
 - Inlet Butterfly Isolation Valve
 - Discharge Butterfly Isolation Valve
 - Silent Check Valve
- **Enclosures / External Connections**
 - Marine Grade Aluminum Enclosure
 - Polyester Powder-Coated Steel Deck and Piping
 - Thermostat and Fan on Mechanical Enclosure
- **Pump Control**
 - Pump Start Relay
 - VFD - Variable Frequency Drive for Control of Pressure
- **Display**
 - 4 Line Monochrome Touch Screen Display



Optional Features

- **Plumbing Configurations**
 - Inlet and Discharge Piping through the deck (bottom)
- **Enclosures**
 - Environmental package: includes heater and insulation/sound dampening
 - Less Enclosure (pump and deck only)

Accessories

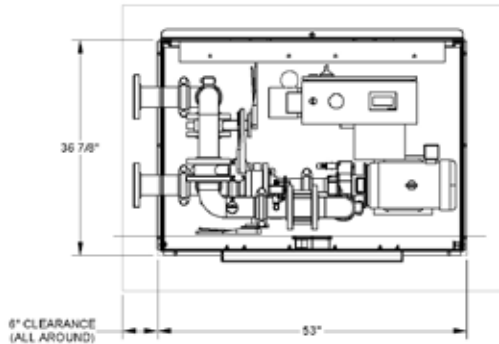
- **Intake Filters**
 - HDPE Suction Intake Piping
 - Foot Valve
 - Intake Screen
- **External Connections**
 - Custom Zee Pipes
 - 2" and 4" Flange Fitting Adapters

HES 1 Pump with Aluminum Enclosure

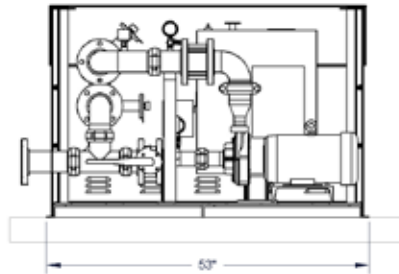
Motor Size	5 HP	7.5 HP	10 HP
Pump Type	Horizontal End Suction		
Power Requirement	480/60/3 V/HZ/PH		
	208-230/60/3 V/HZ/PH		
	208-230/60/1 V/HZ/PH		
Inlet Pressure Requirement	Suction Lift or Boost Applications		
Outlet Pressure	Up to 100 psi (6.9 bar) ⁽¹⁾		
Outlet Flow	Up to 200 gpm (12.6 lps, 45.4 m ³ /h) ⁽¹⁾		
Concrete Slab Dimensions (min)	65" x 49" (165 cm x 125 cm)		
Platform Skid Dimensions (min)	53" x 39.75" (135 cm x 101 cm)		
Inlet / Discharge Size	2" Flange Fitting (adapter)	3" Flange Fitting	4" Flange Fitting (adapter)
Cabinet Height (from slab)	35" (89 cm)		

(1) Refer to pump performance curves, provided upon request from pumps@rainbird.com

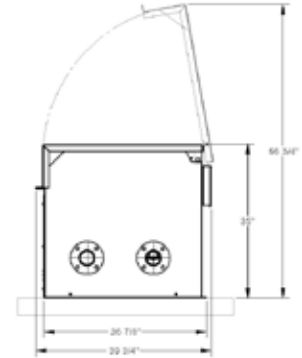
Side Inlet / Discharge



Plan View

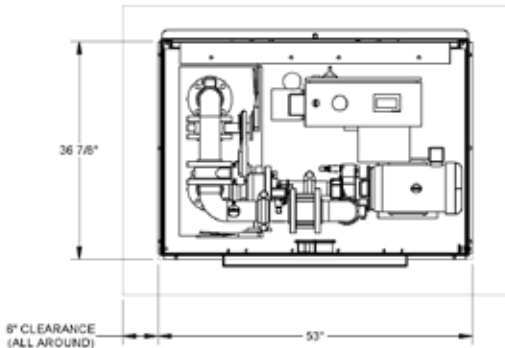


Profile View

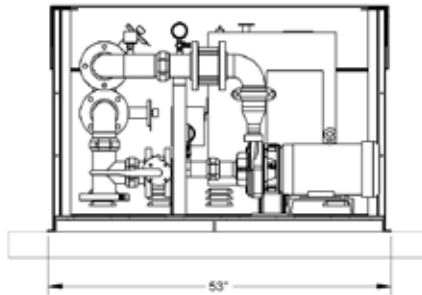


Side View

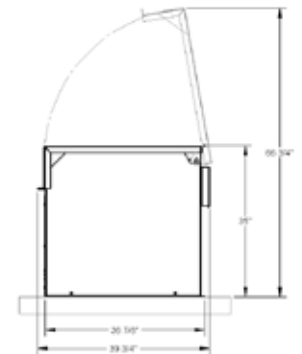
Bottom Inlet / Discharge



Plan View



Profile View



Side View