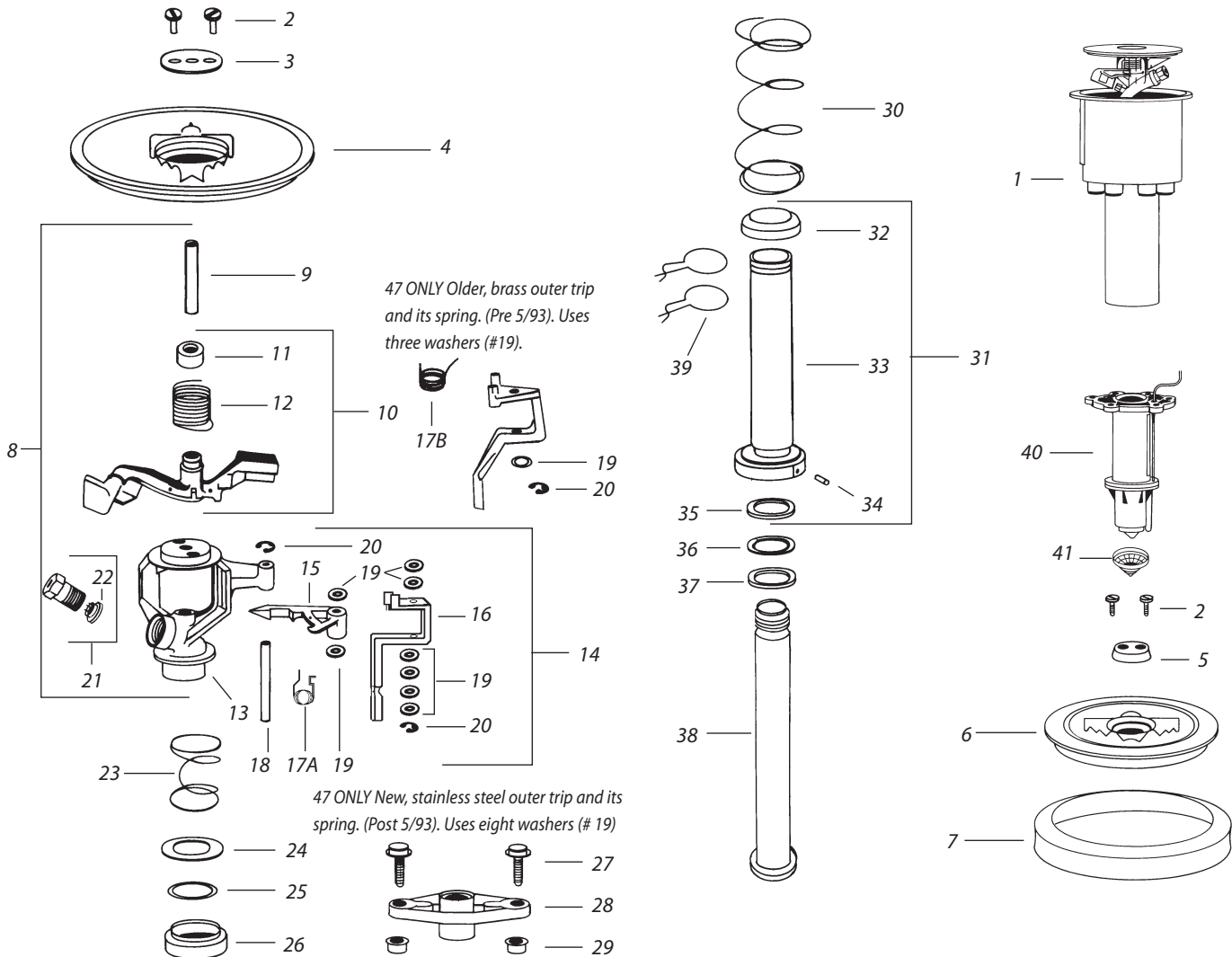


27A / 37A / 47A SAM SERIES  
27A / 37A / 47A VIH-E SERIES



Ref.	Part Description	27ASAM 27ASAM-RC	37ASAM 37ASAM-RC	47ASAM 47ASAM-RC	27A-VIH-E 27A-VIH-E-RC	37A-VIH-E 37A-VIH-E-RC	47A-VIH-E 47A-VIH-E-RC
<b>CASES</b>							
1	1" Plastic Case (NPT)	201283-01	201283-01	201283-01	-	-	-
1	1" Plastic Case (BSP)	201283-02	201283-02	201283-02	-	-	-
<b>COVER ASSEMBLIES</b>							
2	Cover Screws, Standard	200974	200974	200974	200974	200974	200974
3	Retainer, Steel	200740	200740	200740	200740	200740	200740
4	Aluminum Cover	-	-	-	-	-	-
4	Plastic Cover	-	-	-	-	-	-
5	Retainer, Rubber	-	-	-	-	-	-
6	Rubber Cover	-	-	-	-	-	-
7	Rubber Case Ring	-	-	-	-	-	-
-	Cover Screws, Vandal Resistant	200829	200829	200829	200829	200829	200829

Note: Part numbers enclosed in brackets ( ) are not available individually, but may be sold in assemblies or kits.



Ref. Part Description	27ASAM 27ASAM-RC	37ASAM 37ASAM-RC	47ASAM 47ASAM-RC	27A-VIH-E 27A-VIH-E-RC	37A-VIH-E 37A-VIH-E-RC	47A-VIH-E 47A-VIH-E-RC
<b>INTERNAL ASSEMBLY</b>						
<b>UPPER ASSEMBLY</b>						
8 Arm/Body Assembly	-	200126-14	-	-	200126-14	-
9 Fulcrum Pin	200025	200025	200076	200025	200025	200076
10 Arm / Spring Assembly	-	-	-	-	-	-
11 Arm Hood	-	-	-	-	-	-
12 Arm Spring	200027	200089	200089	200027	200089	200089
13 Body	-	-	-	-	-	-
<b>TRIP MECHANISM</b>						
14 Trip Assembly	-	-	-	-	-	-
15 Inner Trip	200060	200060	200060	200060	200060	200060
16 Outer Trip	-	-	-	-	-	-
17A Trip Spring	-	-	-	-	-	-
17B Trip Spring (for Brass Outer Trip-47 ONLY)	-	-	-	-	-	-
18 Trip Shaft	-	-	201932	-	-	201932
19 Spacer Washers (2-27,37)(8-47)	201933	201933	201933	201933	201933	201933
20 E-Ring	-	-	200975	-	-	200975
<b>NOZZLES (Specify nozzle size when ordering.)</b>						
- ADJ Nozzle Assembly	201559	201559	-	201559	201559	-
- Spring	100136	100136	-	100136	100136	-
- Adjustment Pin	100203	100203	-	100203	100203	-
21 Range Nozzle Assembly	-	-	(A) 200079-xx	-	-	(A) 200079-xx
22 Vane	-	-	202143	-	-	202143
<b>BEARING ASSEMBLY</b>						
23 Bearing Spring	(B)	(B)	(B)	(B)	(B)	(B)
24 Steel Top Seal Washer	(B)	(B)	(B)	(B)	(B)	(B)
25 PTFE Top Seal Washer (White)	(C)	(C)	(C)	(C)	(C)	(C)
26 Buna-N Guide Seal (Black)	(B) 200042	(B) 200042	(B) 200042	(B) 200042	(B) 200042	(B) 200042
27 Guide Screws (Current Self Taping)	204090	204090	204090	204090	204090	204090
- Guide Screws (Older Style - Brass)	-	-	-	-	-	-
- Washer (Older Style - Brass)	-	-	-	-	-	-
- Insert (Older Style - Brass)	-	-	-	-	-	-
28 Bearing Guide	207416	207416	207416	207416	207416	207416
29 Guide Bushings (Current Style Only)	204308	204308	204308	204308	204308	204308
30 Retract Spring	201113	201113	201113	201113	201113	201113
31 Bearing Sleeve Assembly	-	-	-	-	-	-
32 Buna-N Lower Seal (Black)	(C)	(C)	(C)	(C)	(C)	(C)
33 Bearing Sleeve	-	-	-	-	-	-
34 Bearing Sleeve Pin	200064	200064	200064	200064	200064	200064
35 Wear Ring (Gold)	(C)	(C)	(C)	(C)	(C)	(C)
36 PTFE Speed Washer (White)	(C)	(C)	(C)	(C)	(C)	(C)
37 Buna-N Washer Seal (Gray)	(C)	(C)	(C)	(C)	(C)	(C)
38 Bearing Nipple	-	-	-	-	-	-
39 Friction Collars	200164	200164	200164	200164	200164	200164
Friction Collars, Locking	-	-	-	-	-	-
<b>40 SAM SPRINKLER HOUSING ASSEMBLY</b>						
- Screw, Housing (2)	-	-	-	-	-	-
- Upper Housing Seal	-	-	-	-	-	-
- Lower Housing Seal	201079	201079	201079	-	-	-
- Vent Tube	201158	201158	201158	-	-	-
- Valve Tube	-	-	-	-	-	-
41 Inlet Screen	200006	200006	200006	-	-	-
<b>VIH-E SOLENOID ASSEMBLY</b>						
- Rubber Retainer	-	-	-	206920-01	206920-01	206920-01
- Coil	-	-	-	627167	627167	627167
- U-Frame	-	-	-	602118	602118	602118
- Base Nut	-	-	-	212124S	212124S	212124S
- Core Tube / Plunger Spring Assembly	-	-	-	602142	602142	602142
- Crush Washer	-	-	-	21297201S	21297201S	21297201S

(A) Specify Nozzle Size 14, 15, 18

(B) Included in Bearing Spring Washer Kit # 203731.

(C) Included in Bearing Washer Kit # 203732.

Note: Part numbers enclosed in brackets ( ) are not available individually, but may be sold in assemblies or kits.