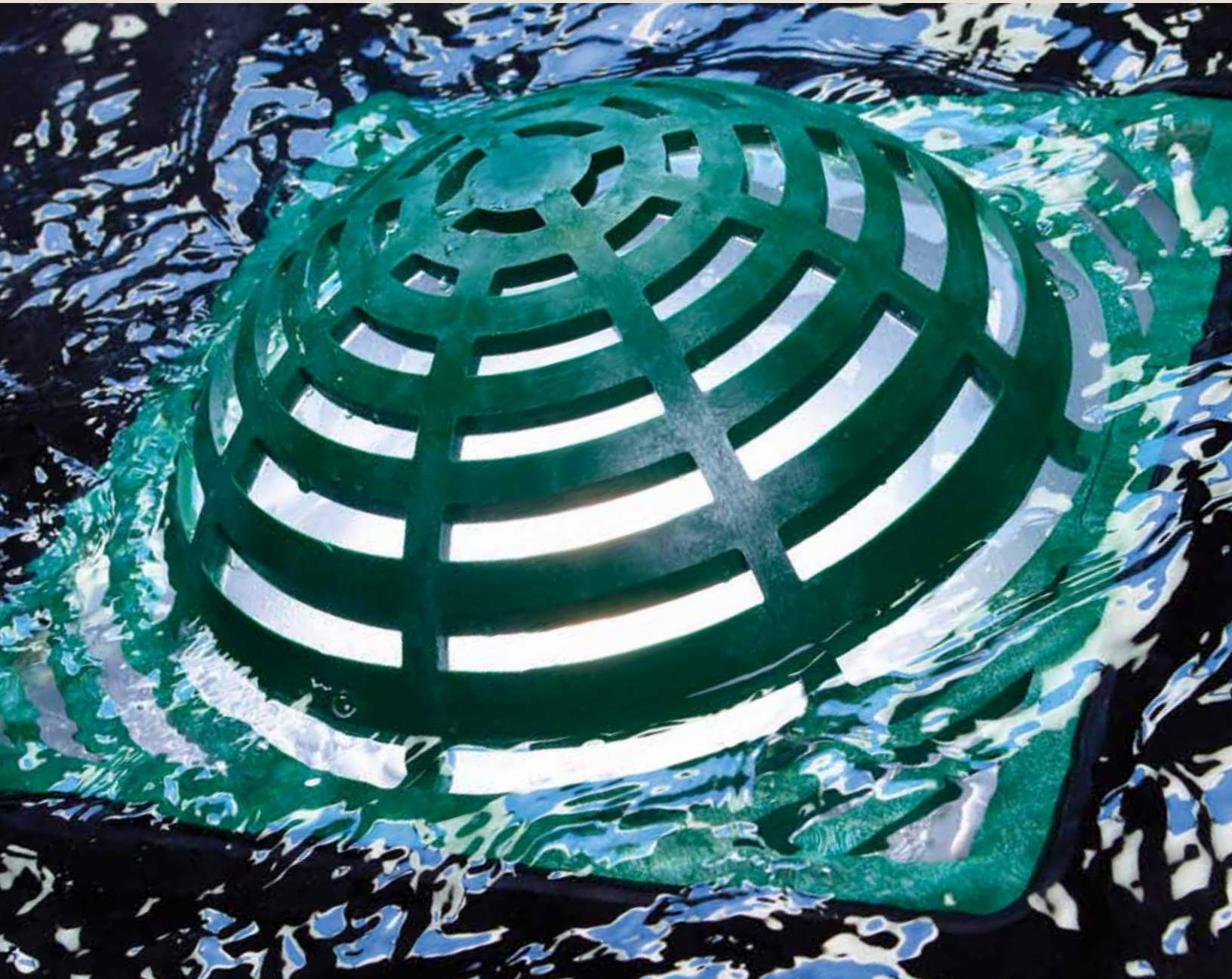




Rain Bird Drainage Products



The Intelligent Use of Water.™



The newest name in drainage is one you already trust.

For decades, we've been finding new ways to use water more intelligently. We're proud to introduce a few more: Rain Bird drainage products. Ruggedly constructed and designed to work together, these grates, basins and accessories can help you efficiently manage water run-off for virtually any residential, commercial or municipal site. Put them in the ground. You'll see why they're the first drainage products worthy of the Rain Bird name.

New product category. Same toughness.

No shortcuts here. Our grates, basins and drainage accessories were engineered with the same exacting standards of a Rain Bird spray head, valve or controller.

Proven Reliability

We have a reputation to protect. Rain Bird drainage products are built using the highest quality materials and rigorously tested for durability.

Three-Year Warranty

You need products that will last long after the job's done. That's why we stand behind our drainage products with the longest warranty in the drainage product category.

Color, size and style are optional. Loose fits are not.

No matter the job, you'll have the equipment you need to do it right. We offer grates and basins of varying dimensions, shapes and colors—all designed to fit together for tight, worry-free connections.

Four Colors

Out of sight, out of mind. Available in green, black, sand and gray, our grates easily blend into any landscape, escaping notice and protecting overall aesthetics.

Full Compatibility

Any way you put them together, our grates and basins will give you the best fit. For easy upgrades and quick replacements, our products are also compatible with components from most other leading manufacturers.



See the bigger picture. Earn a bigger reward.

We're in the business of helping people use water wisely. Offering a full line of drainage products to complement our irrigation solutions was the next step. And what's good for Mother Nature is good for your business.

Part of a Complete Water Management Solution

Drainage and irrigation are integral to efficient, environmentally-friendly water management. Now you have a single proven point of contact to help you achieve the best possible results on both fronts.

Rain Bird® Rewards Points Eligible

If you're already installing Rain Bird irrigation and are a member of the Rain Bird® Rewards loyalty program, using our drainage products is a no-brainer. Because now you can consolidate your irrigation and drainage purchases to maximize your Rewards points.

It helps to have an industry professional in the business.

Got a water management question? Get help from the people who know the industry and its unique challenges better than anyone else.

Leading Expertise

Unlike some of our competitors, we don't outsource our sales and support. If you have a question or concern, it will be handled by a Rain Bird employee who understands water management inside and out.



In-Depth Training

Whether you're a veteran or a newcomer to the world of drainage, we can help bring you up to speed on the latest trends and best-in-class installation techniques through classes that are part of the industry-leading Rain Bird Academy.



Plastic Round Grates

Features

- Manufactured from structurally foamed High-Density Polyethylene (HDPE)
- UV stabilized to protect from sun degradation
- Flat and atrium (domed) profiles
- Flat grates available in green, black, sand and gray
- Atrium grates available in green, black and sand
- Each grate has three stepped diameters to fit Sewer and Drain (S & D) Pipe and Fittings, Triple Wall Pipe and Corrugated Pipe
- Textured anti-skid surface¹
- Load rated for pedestrian traffic^{1, 2}
- Load rated for autos and light trucks at speeds less than 20 mph^{1, 2}
- ADA compliant¹
- Made in the USA

Flat



3"
DG3RFG



4"
DG4RFG



6"
DG6RFG

Atrium



3"
DG3RAG



4"
DG4RAG



6"
DG6RAG

Model Number	Color	Each Diameter Fits			Open Slot Width	Open Surface Area	Maximum Flow Rating	Maximum Load
		Small	Medium	Large				
3" Round Flat								
DG3RFG	Green	3" Triple Wall Pipe	3" S & D Pipe (ASTM D2729) 3" Corrugated Pipe	3" S & D Fittings (SDR 35)	3/16"	3 sq in	3 GPM	500 lbs
DG3RFB	Black							
DG3RFS	Sand							
DG3RFC	Gray							
4" Round Flat								
DG4RFG	Green	4" Triple Wall Pipe	4" S & D Pipe (ASTM D2729) 4" Corrugated Pipe	4" S & D Fittings (SDR 35)	1/4"	5 sq in	6 GPM	750 lbs
DG4RFB	Black							
DG4RFS	Sand							
DG4RFC	Gray							
6" Round Flat								
DG6RFG	Green	6" Sewer Pipe (ASTM D3034, SDR 35)	6" S & D Pipe (ASTM D2729) 6" Corrugated Pipe	6" S & D Fittings (SDR 35) 6" Round Catch Basins (DB6R1 & DB6R2)	5/16"	13 sq in	16 GPM	1,000 lbs
DG6RFB	Black							
DG6RFS	Sand							
DG6RFC	Gray							
3" Round Atrium								
DG3RAG	Green	3" Triple Wall Pipe	3" S & D Pipe (ASTM D2729) 3" Corrugated Pipe	3" S & D Fittings (SDR 35)	1/4"	9 sq in	12 GPM	NA
DG3RAB	Black							
DG3RAS	Sand							
4" Round Atrium								
DG4RAG	Green	4" Triple Wall Pipe	4" S & D Pipe (ASTM D2729) 4" Corrugated Pipe	4" S & D Fittings (SDR 35)	5/16"	16 sq in	20 GPM	NA
DG4RAB	Black							
DG4RAS	Sand							
6" Round Atrium								
DG6RAG	Green	6" Sewer Pipe (ASTM D3034, SDR 35)	6" S & D Pipe (ASTM D2729) 6" Corrugated Pipe	6" S & D Fittings (SDR 35) 6" Round Catch Basins (DB6R1 & DB6R2)	3/8"	28 sq in	36 GPM	NA
DG6RAB	Black							
DG6RAS	Sand							

¹ Flat grate only

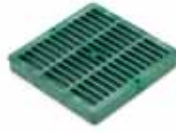
² Maximum load rating based on basin encased in concrete and weight uniformly applied across entire grate surface

Plastic Square Grates

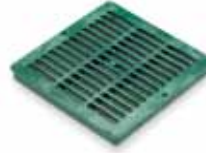
Features

- Manufactured from structurally foamed High-Density Polyethylene (HDPE)
- UV stabilized to protect from sun degradation
- Flat and atrium (domed) profiles
- Flat grates available in green, black, sand and gray
- Atrium grates available in green and black
- Fits 9", 12" and 18" Square Catch Basins
- Fits 9" and 12" Square Low-Profile Basins
- Textured anti-skid surface¹
- Load rated for autos and light trucks at speeds less than 20 mph^{1, 2}
- Includes two screw holes to secure to basin³
- ADA compliant¹
- Made in the USA

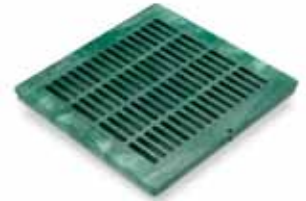
Flat



9"
DG9SFG

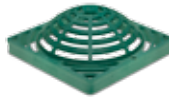


12"
DG12SFG



18"
DG18SFG

Atrium



9"
DG9SAG



12"
DG12SAG

Model Number	Color	Fits	Open Slot Width	Open Surface Area	Maximum Flow Rating	Maximum Load
9" Square Flat						
DG9SFG	Green	9" Square Catch Basin (DB9S2) 9" Low-Profile Basin (DB9SLP)	3/8"	38 sq in	50 GPM	2,000 lbs
DG9SFB	Black					
DG9SFS	Sand					
DG9SFC	Gray					
12" Square Flat						
DG12SFG	Green	12" Square Catch Basins (DB12S2 & DB12S4) 12" Low-Profile Basin (DB12SLP)	7/16"	53 sq in	70 GPM	3,000 lbs
DG12SFB	Black					
DG12SFS	Sand					
DG12SFC	Gray					
18" Square Flat						
DG18SFG	Green	18" Square Catch Basins (DB18S2 & DB18S4)	15/32"	92 sq in	120 GPM	4,000 lbs
DG18SFB	Black					
DG18SFS	Sand					
DG18SFC	Gray					
9" Square Atrium						
DG9SAG	Green	9" Square Catch Basin (DB9S2) 9" Low-Profile Basin (DB9SLP)	3/8"	31 sq in	40 GPM	NA
DG9SAB	Black					
12" Square Atrium						
DG12SAG	Green	12" Square Catch Basins (DB12S2 & DB12S4) 12" Low-Profile Basin (DB12SLP)	7/16"	50 sq in	65 GPM	NA
DG12SAB	Black					

¹Flat grate only

²Maximum load rating based on basin encased in concrete and weight uniformly applied across entire grate surface

³Use #6 1.5" long Phillips flat head stainless screws

Universal Square Grates

Features

- Manufactured from structurally foamed High-Density Polyethylene (HDPE)
- UV stabilized to protect from sun degradation
- Available in green, black, sand and gray
- Textured anti-skid surface
- Load rated for pedestrian traffic¹
- ADA compliant
- Made in the USA



DG7USG

Model Number	Color	Fits	Open Slot Width	Open Surface Area	Maximum Flow Rating	Maximum Load
7" Universal Square Flat						
DG7USG	Green	• 6" Round Catch Basin (DB6R1, DB6R2)	1/4"	13 sq in	11 GPM	250 lbs
DG7USB	Black	• 3" or 4" S & D Pipe (ASTM D2729)				
DG7USS	Sand	• 3" or 4" Corrugated Pipe				
DG7USC	Gray	• 3" or 4" Triple Wall Pipe				
		• 3", 4" or 6" S & D Fittings (SDR 35)				

¹Maximum load rating based on basin encased in concrete and weight uniformly applied across entire grate surface

Round Catch Basins

Features

- Manufactured from High-Impact Polystyrene (HIPS)
- UV stabilized to protect from sun degradation
- Available in both one and two outlet models
- Accepts 6" Flat Grates, 6" Atrium Grates and 7" Universal Grates
- Universal outlet(s) used to connect to 3" or 4" Sewer and Drain Pipe (ASTM D2729), 3" or 4" Corrugated Pipe and 3" or 4" Triple Wall Pipe
- Includes a sump to allow sediment to settle in basin to minimize clogging of pipes
- To extend height of basin, use 6" PVC Pipe (ASTM D2729 and ASTM D3034, SDR 35) as a riser
- Made in the USA



DB6R1

DB6R2

Model Number	Number of Outlets	Inlet (Top) Accepts	Outlet (Side) Fits	Capacity	Sump Capacity
6" Round, 1 Outlet					
DB6R1	1	• 6" Round Flat and Atrium Grates • 7" Universal Square Grates • 6" PVC Pipe (ASTM D2729, ASTM D3034, SDR 35)	• 3" or 4" Corrugated Pipe • 3" or 4" Triple Wall Pipe • S & D Pipe (ASTM D2729)	0.80 gals	0.20 gals
6" Round, 2 Outlets					
DB6R2	2	• 6" Round Flat and Atrium Grates • 7" Universal Square Grates • 6" PVC Pipe (ASTM D2729, ASTM D3034, SDR 35)	• 3" or 4" Corrugated Pipe • 3" or 4" Triple Wall Pipe • S & D Pipe (ASTM D2729)	0.80 gals	0.20 gals

Square Catch Basins

Features

- Manufactured from High-Density Polyethylene (HDPE)
- UV stabilized to protect from sun degradation
- 12" and 18" basins have two or four outlets plus an optional perforated outlet at the bottom of the basin
- Use a 3" and 4" Basin Adapter to connect basin to 3" or 4" Corrugated Pipe and 3" or 4" Triple Wall Pipe
- Use a 6" Basin Adapter to connect basin to 6" PVC Pipe (ASTM D2729 and ASTM D3034, SDR 35) and 6" Corrugated Pipe
- Use a Basin Plug to plug unused outlets
- Use 9" or 12" Square Basin Riser(s) to extend height of 9" and 12" Square Catch Basins by 6" in height, respectively
- Accepts 9", 12" or 18" Square Flat and Square Atrium Grates
- Includes a sump to allow sediment to settle in basin to minimize clogging of pipes
- Includes four screw holes to enable grates to be secured to basin
- Made in the USA



Model Number	Number of Outlets	Inlet (Top) Accepts	Outlet (Side) Fits	Capacity	Sump Capacity
9" Square, 2 Outlets					
DB9S2	2	<ul style="list-style-type: none"> • 9" Square Flat Grates • 9" Square Atrium Grates • 9" Square Basin Riser (DBRE9) 	<ul style="list-style-type: none"> • Basin Plug (DBAAP) • 3" & 4" Basin Adapter (DBAA34 or DBAA034) • 6" Basin Adapter (DBAA6) 	2.20 gals	0.45 gals
12" Square, 2 Outlets					
DB12S2	2	<ul style="list-style-type: none"> • 12" Square Flat Grates • 12" Square Atrium Grates • 12" Square Basin Riser (DBRE12) 	<ul style="list-style-type: none"> • Basin Plug (DBAAP) • 3" & 4" Basin Adapter (DBAA34 or DBAA034) • 6" Basin Adapter (DBAA6) 	5.10 gals	1.25 gals
12" Square, 4 Outlets					
DB12S4	4	<ul style="list-style-type: none"> • 12" Square Flat Grates • 12" Square Atrium Grates • 12" Square Basin Riser (DBRE12) 	<ul style="list-style-type: none"> • Basin Plug (DBAAP) • 3" & 4" Basin Adapter (DBAA34 or DBAA034) • 6" Basin Adapter (DBAA6) 	5.10 gals	1.25 gals
18" Square, 2 Outlets					
DB18S2	2	<ul style="list-style-type: none"> • 18" Square Flat Grates 	<ul style="list-style-type: none"> • Basin Plug (DBAAP) • 3" & 4" Basin Adapter (DBAA34 or DBAA034) • 6" Basin Adapter (DBAA6) 	16.70 gals	4.90 gals
18" Square, 4 Outlets					
DB18S4	4	<ul style="list-style-type: none"> • 18" Square Flat Grates 	<ul style="list-style-type: none"> • Basin Plug (DBAAP) • 3" & 4" Basin Adapter (DBAA34 or DBAA034) • 6" Basin Adapter (DBAA6) 	16.70 gals	4.90 gals

Square Low-Profile Basins

Features

- Manufactured from High-Impact Polystyrene (HIPS)
- UV stabilized to protect from sun degradation
- One bottom outlet designed to accept all Basin Adapters
- Use a 3" and 4" Basin Adapter to connect to 3" or 4" Corrugated Pipe and 3" or 4" Triple Wall Pipe
- Use a 6" Basin Adapter to connect to 6" PVC Pipe (ASTM D2729 and ASTM D3034, SDR 35) and 6" Corrugated Pipe
- Accepts 9" and 12" Square Flat Grates
- Accepts 9" and 12" Square Atrium Grates
- Includes two screw holes to enable grates to be secured to Low-Profile Basin
- Made in the USA



DB9SLP



DB12SLP

Model Number	Inlet (Top) Accepts	Outlet (Side) Fits
9" Square		
DB9SLP	<ul style="list-style-type: none"> • 9" Square Flat Grates • 9" Square Atrium Grates • 9" Square Basin Riser (DBRE9) 	<ul style="list-style-type: none"> • 3" & 4" Basin Adapter (DBAA34 or DBAA034) • 6" Basin Adapter (DBAA6)
12" Square		
DB12SLP	<ul style="list-style-type: none"> • 12" Square Flat Grates • 12" Square Atrium Grates • 12" Square Basin Riser (DBRE12) 	<ul style="list-style-type: none"> • 3" & 4" Basin Adapter (DBAA34 or DBAA034) • 6" Basin Adapter (DBAA6)

Square Basin Kits

For your convenience, Basin Kits are available with the most popular basin, grate and adapter components required on most jobs.

Model Number	Each Kit Includes	
9" Square Basin Kit		
DB9KITG	<ul style="list-style-type: none"> • 9" Square Basin with two outlets (DB9S2) • Two 3" and 4" Adapters (DBAA34) 	<ul style="list-style-type: none"> • Basin Plug (DBAAP) • 9" Square Flat Grate, GREEN (DG9SFG)
DB9KITB	<ul style="list-style-type: none"> • 9" Square Basin with two outlets (DB9S2) • Two 3" and 4" Adapters (DBAA34) 	<ul style="list-style-type: none"> • Basin Plug (DBAAP) • 9" Square Flat Grate, BLACK (DG9SFB)
12" Square Basin Kit (not shown)		
DB12KITG	<ul style="list-style-type: none"> • 12" Square Basin with two outlets (DB12S2) • Two 3" and 4" Adapters (DBAA34) 	<ul style="list-style-type: none"> • Basin Plug (DBAAP) • 12" Square Flat Grate, GREEN (DG12SFG)
DB12KITB	<ul style="list-style-type: none"> • 12" Square Basin with two outlets (DB12S2) • Two 3" and 4" Adapters (DBAA34) 	<ul style="list-style-type: none"> • Basin Plug (DBAAP) • 12" Square Flat Grate, BLACK (DG12SFB)



DB9KITG

Basin Adapters and Accessories



Model Number	Description	Use
DBAAP	Basin Plug	<ul style="list-style-type: none"> Blocks 9", 12" & 18" Square Basin side outlets
DBAA34	3" and 4" Basin Adapter	<ul style="list-style-type: none"> Adapts 9", 12" and 18" Square Basin side outlets and 9" & 12" Low-Profile Basin outlets to 3" or 4" PVC and Corrugated Pipe
DBAAO34	3" and 4" Offset Basin Adapter	<ul style="list-style-type: none"> Adapts 9", 12" & 18" Square Basin side outlets and 9" & 12" Low-Profile Basin outlets to 3" or 4" PVC and Corrugated Pipe
DBAA6	6" Basin Adapter	<ul style="list-style-type: none"> Adapts 9", 12" & 18" Square Basin side outlets and 9" & 12" Low-Profile Basin outlets to 6" PVC and Corrugated Pipe
DPAFHA34	Fitting Adapter	<ul style="list-style-type: none"> Adapts 3" or 4" Triple Wall Pipe to 3" or 4" PVC and Corrugated Pipe
DBRE9	9" Square Basin Riser	<ul style="list-style-type: none"> Extends height of 9" Square Basin or 9" Low-Profile Basin by 6"
DBRE12	12" Square Basin Riser	<ul style="list-style-type: none"> Extends height of 12" Square Basin or 12" Low-Profile Basin by 6"

Drainage Pop-Up Valves

Features

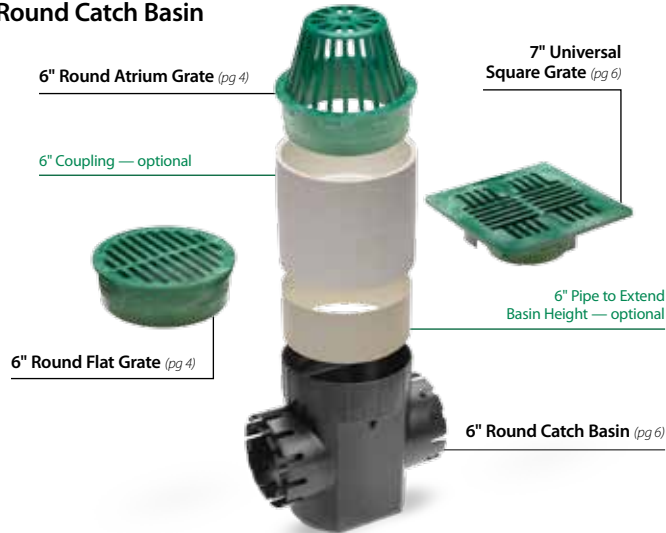
- Available in four configurations
- Pop-up valve body manufactured from structurally foamed High-Density Polyethylene (HDPE)
- Elbow (where applicable) manufactured from PVC
- Adapter (where applicable) manufactured from High Impact Polystyrene (HIPS)
- UV stabilized to protect from sun degradation
- Spring-loaded cover rises ½" to discharge excess water in system
- Spring automatically retracts cover to closed position after excess water is discharged
- Can be used in both vertical and horizontal position
- Stainless steel spring to prevent rusting
- PVC elbows (where applicable) include a ¼" drain hole to eliminate standing water
- Made in the USA



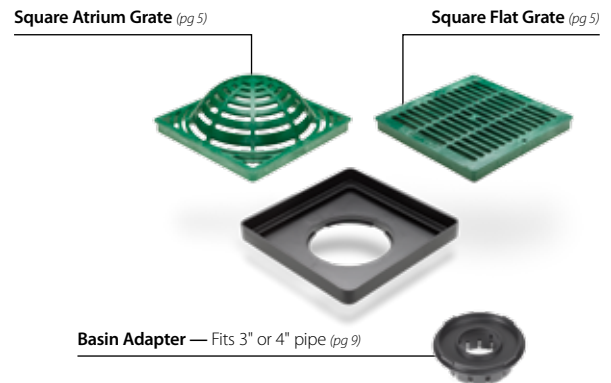
Model Number	Color	Description	Connects To
DPUV0	Green	Drainage Pop-Up Valve	<ul style="list-style-type: none"> • 3" or 4" S & D Fittings (SDR 35)
DPUV3E	Green	Drainage Pop-Up Valve with 3" PVC Elbow	<ul style="list-style-type: none"> • 3" S & D Pipe (ASTM D2729) • 3" Triple Wall Pipe
DPUV4E	Green	Drainage Pop-Up Valve with 4" PVC Elbow	<ul style="list-style-type: none"> • 4" S & D Pipe (ASTM D2729 & D3034) • 4" Triple Wall Pipe
DPUV4EHUB	Green	Drainage Pop-Up Valve with 4" PVC Elbow and Adapter (DPAFHA34)	<ul style="list-style-type: none"> • 3" or 4" Corrugated Pipe • 3" or 4" Triple Wall Pipe • 3" or 4" S & D Pipe (ASTM D2729)

Exploded Illustrations

Round Catch Basin



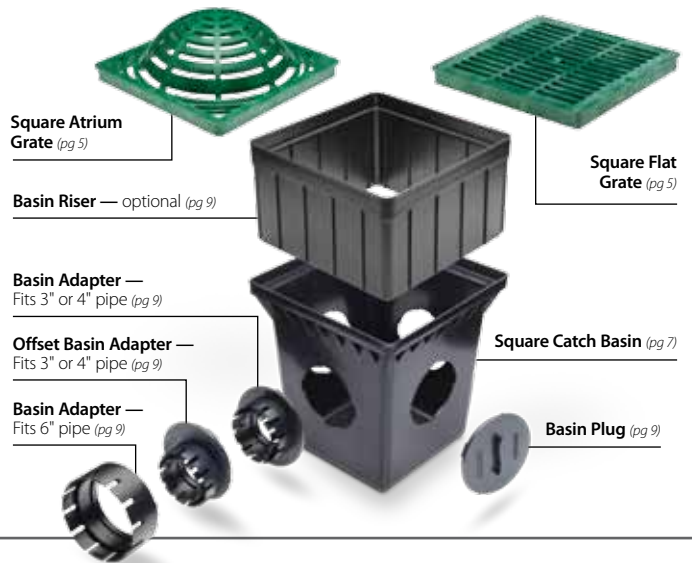
Low-Profile Basin



Compatible Drainage Pipe



Square Catch Basin



Worry-Free Warranty

Our comprehensive drainage product warranty makes it even easier to choose Rain Bird and relax. All Rain Bird drainage products are warranted to the trade for a period of three years from the date of original purchase. A Rain Bird warranty is hassle-free support that enables maximum peak performance by installation professionals. For you, it's the added peace of mind of knowing Rain Bird is there when you need it.

Rain Bird's Professional Customer Satisfaction Policy

Rain Bird will repair or replace at no charge any Rain Bird drainage product that fails in normal use within the warranty period of

three years. You must return it to the dealer or distributor where you bought it. Product failures due to acts of God are not covered by this warranty. This commitment to repair or replace is our sole and total warranty.

Implied Warranties of Merchantability and Fitness, if Applicable, are Limited to One Year from the Date of Sale.

We will not, under any circumstances, be liable for incidental or consequential damages, no matter how they occur.

The Intelligent Use of Water.™

LEADERSHIP • EDUCATION • PARTNERSHIPS • PRODUCTS

At Rain Bird, we believe it is our responsibility to develop products and technologies that use water efficiently. Our commitment also extends to education, training and services for our industry and our communities.

The need to conserve water has never been greater. We want to do even more, and with your help, we can. Visit www.rainbird.com for more information about The Intelligent Use of Water.™



Rain Bird Corporation
6991 East Southpoint Road
Tucson, AZ 85756
Phone: (520) 741-6100
Fax: (520) 741-6522

Rain Bird Technical Services
(800) RAINBIRD (U.S. and Canada)

Rain Bird Corporation
970 West Sierra Madre Avenue
Azusa, CA 91702
Phone: (626) 812-3400
Fax: (626) 812-3411

Specification Hotline
(800) 458-3005 (U.S. and Canada)

Rain Bird International, Inc.
1000 West Sierra Madre Avenue
Azusa, CA 91702
Phone: (626) 963-9311
Fax: (626) 852-7343

www.rainbird.com