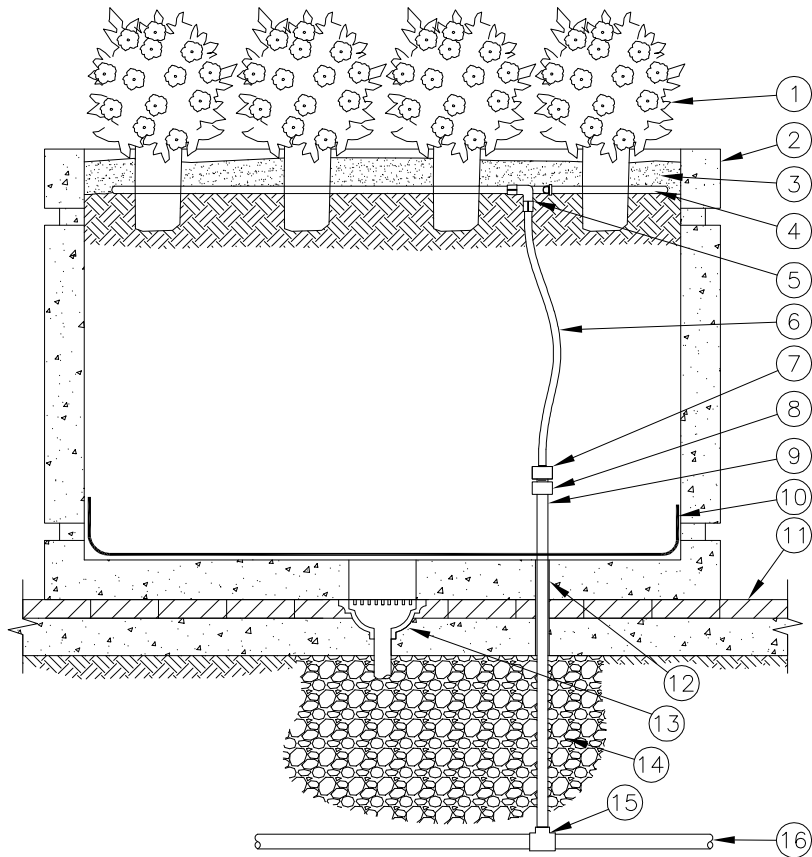
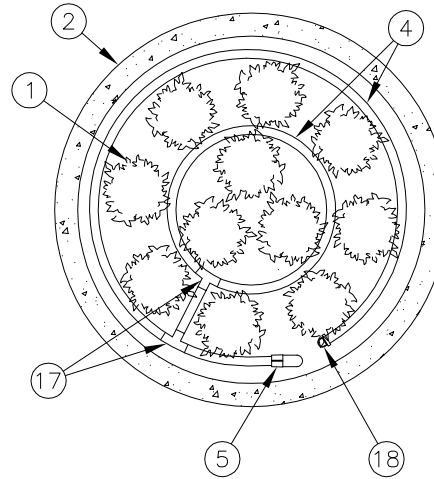


SIDE VIEW



PLAN VIEW



NOTE:
1. AT FITTINGS WHERE THERE IS A CHANGE OF DIRECTION SUCH AS TEES OR ELBOWS, USE TIE-DOWN STAKES ON EACH LEG OF THE CHANGE OF DIRECTION.

- ① PLANT MATERIAL (TYPICAL)
- ② 6-FOOT DIAMETER RAISED PLANTER
- ③ 2" - 3" DEPTH OF MULCH
- ④ ON-SURFACE DRIPLINE:
RAIN BIRD XF SERIES DRIPLINE (TYPICAL)
POTABLE: XFD DRIPLINE
NON-POTABLE: XFDP DRIPLINE
- ⑤ 1/2-INCH ELL: RAIN BIRD EASY FIT COMPRESSION FITTING MDCFEL
- ⑥ RAIN BIRD XF SERIES BLANK TUBING
- ⑦ BARB FEMALE ADAPTER: XFF-MA-075
- ⑧ PVC MALE ADAPTER
- ⑨ 3/4-INCH PVC RISER (LENGTH AS REQUIRED)
- ⑩ FILTER FABRIC
- ⑪ HARDSCAPE SURFACE
- ⑫ 1-INCH DIA. PENETRATION FOR IRRIGATION LATERAL SUPPLY LINE
- ⑬ DRAIN
- ⑭ DRAINAGE GRAVEL
- ⑮ PVC SCH 40 TEE OR ELL
- ⑯ PVC LATERAL SUPPLY PIPE
- ⑰ 1/2-INCH BARB TEE:
RAIN BIRD XFF-TEE (TYPICAL)
- ⑱ REMOVABLE FLUSH CAP: RAIN BIRD MDCFAP



XFD ON-SURFACE DRIPLINE

N.T.S.

6-FOOT DIAMETER RAISED PLANTER

12-18-2012