

Drainage Products

Technical Specifications



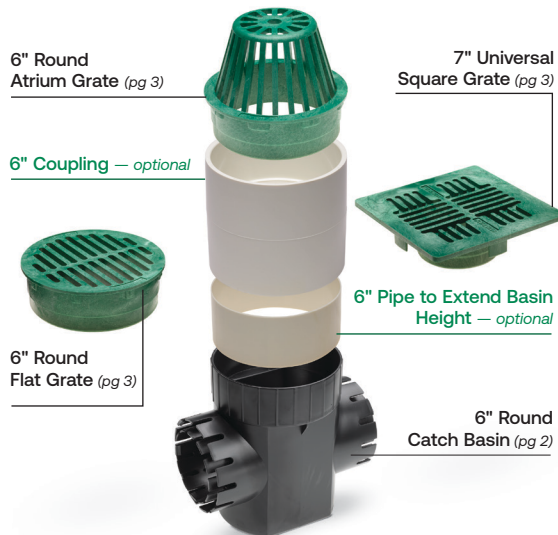
Ruggedly constructed and designed to work together, these drainage grates, basins, adapters, and accessories can help you efficiently manage water run-off for virtually any residential, light commercial or municipal site.



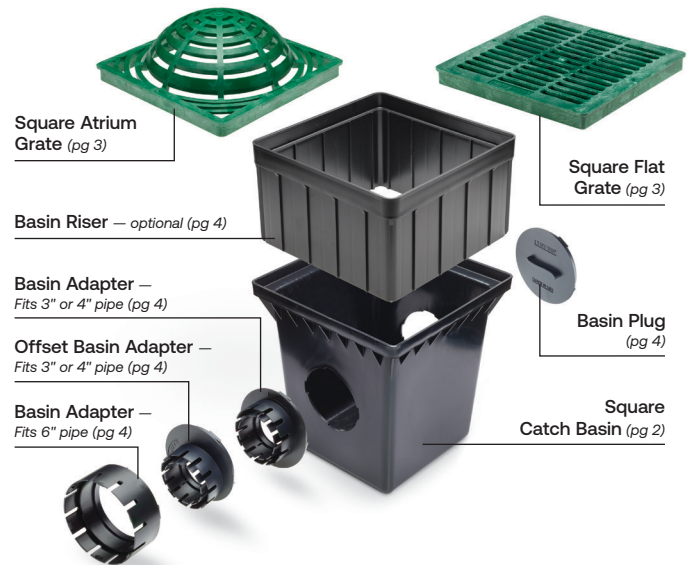
Recycled Plastics

All drainage models are constructed from 100% recycled plastic and therefore qualify for points on LEED projects.

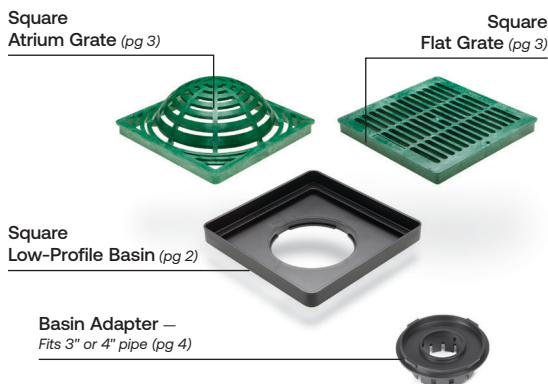
Round Catch Basin



Square Catch Basin



Low-Profile Basin



Compatible Drainage Pipe

(not manufactured by Rain Bird)



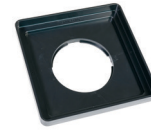
Catch Basins and Kits

FEATURES

- Manufactured from High-Density Polyethylene (HDPE)
- UV stabilized to protect from sun degradation
- Includes screw holes to enable grates to be secured to basins
- Square and Round Basins include a sump to minimize clogging of pipes



SQUARE CATCH BASIN



SQUARE LOW-PROFILE BASINS

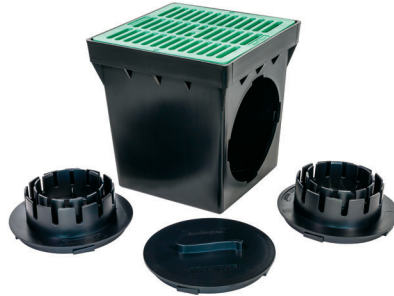


ROUND-CATCH BASINS

Square Basin Kits

INCLUDES:

- Square Basin with two outlets
- Two 3" & 4" Adapters (DBAA34)
- Basin Plug (DBAAP)
- Square Flat Grate



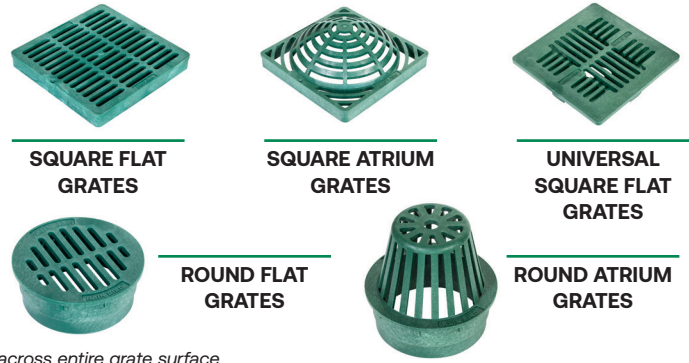
| 9" Kit | | | |
|----------|-------|-----------|-----------|
| DB9KITG | Green | 2.20 gals | 0.45 gals |
| DB9KITB | Black | | |
| 12" Kit | | | |
| DB12KITG | Green | 5.10 gals | 1.25 gals |
| DB12KITB | Black | | |

| Model Number | Number of Outlets | Inlet (Top) Accepts | Outlet Fits | Capacity | Sump Capacity |
|----------------------------------|-------------------|---|---|------------|---------------|
| SQUARE CATCH BASINS | | | | | |
| 9" Square | | | | | |
| DB9S2 | 2 | <ul style="list-style-type: none"> • 9" Square Flat Grates (DG9SFG or DG9SFB) • 9" Square Basin Riser (DBRE9) | <ul style="list-style-type: none"> • Basin Plug (DBAAP) • 3" & 4" Basin Adapter (DBAA34 or DBAAO34) • 6" Basin Adapter (DBAA6) | 2.20 gals | 0.45 gals |
| 12" Square | | | | | |
| DB12S2 | 2 | <ul style="list-style-type: none"> • 12" Square Flat Grates (DG12SFG or DG12SFB) • 12" Square Atrium Grates (DG12SAG or DG12SAB) • 12" Square Basin Riser (DBRE12) | <ul style="list-style-type: none"> • Basin Plug (DBAAP) • 3" & 4" Basin Adapter (DBAA34 or DBAAO34) • 6" Basin Adapter (DBAA6) | 5.10 gals | 1.25 gals |
| 18" Square | | | | | |
| DB18S2 | 2 | <ul style="list-style-type: none"> • 18" Square Flat Grates (DG18SFG or DG18SFB) | <ul style="list-style-type: none"> • Basin Plug (DBAAP) • 3" & 4" Basin Adapter (DBAA34 or DBAAO34) • 6" Basin Adapter (DBAA6) | 16.70 gals | 4.90 gals |
| SQUARE LOW-PROFILE BASINS | | | | | |
| 9" Square Low-Profile | | | | | |
| DB9SLP | — | <ul style="list-style-type: none"> • 9" Square Flat Grates (DG9SFG) • 9" Square Basin Riser (DG9SFG or DG9SFB) | <ul style="list-style-type: none"> • 3" & 4" Basin Adapter (DBAA34 or DBAAO34) • 6" Basin Adapter (DBAA6) | — | — |
| 12" Square Low-Profile | | | | | |
| DB12SLP | — | <ul style="list-style-type: none"> • 12" Square Flat Grates (DG12SFG or DG12SFB) • 12" Square Atrium Grates (DG12SAG or DG12SAB) • 12" Square Basin Riser (DBRE12) | <ul style="list-style-type: none"> • 3" & 4" Basin Adapter (DBAA34 or DBAAO34) • 6" Basin Adapter (DBAA6) | — | — |
| ROUND CATCH BASINS | | | | | |
| 6" Round | | | | | |
| DB6R1 | 1 | <ul style="list-style-type: none"> • 6" Round Flat and Atrium Grates (DG6RFG, DG6RFB, DG6RAG, or DG6RAB) | <ul style="list-style-type: none"> • 3" or 4" S & D Pipe (ASTM D2729) • 3" or 4" Corrugated Pipe • 3" or 4" Triple Wall Pipe | 0.80 gals | 0.20 gals |
| DB6R2 | 2 | <ul style="list-style-type: none"> • 7" Universal Square Grates (DG7USG or DG7USB) • 6" PVC Pipe (ASTM D2729, ASTM D3034, SDR 35) | | | |

Grates

FEATURES

- Manufactured from High-Density Polyethylene (HDPE)
- UV stabilized to protect from sun degradation
- Each grate has three stepped diameters to fit various piping
- Flat Grates have a textured anti-skid surface
- For Flat Grates, load rated for autos and light trucks at speeds less than 20 mph¹
- Flat grates are ADA compliant



¹Maximum load rating based on basin encased in concrete and weight uniformly applied across entire grate surface

| Model Number | Color | Fits | Open Slot Width | Open Surface Area | Maximum Flow Rating | Maximum Load |
|-------------------------------------|-------|---|-----------------|-------------------|---------------------|--------------|
| SQUARE FLAT GRATES | | | | | | |
| 9" | | | | | | |
| DG9SFG | Green | • 9" Square Catch Basins (DB9S2) | 3/8" | 38 sq in | 50 GPM | 2,000 lbs |
| DG9SFB | Black | • 9" Low-Profile Basin (DB9SLP) | | | | |
| 12" | | | | | | |
| DG12SFG | Green | • 12" Square Catch Basins (DB12S2) | 7/16" | 53 sq in | 70 GPM | 3,000 lbs |
| DG12SFB | Black | • 12" Low-Profile Basin (DB12SLP) | | | | |
| 18" | | | | | | |
| DG18SFG | Green | • 18" Square Catch Basins (DB18S2) | 15/32" | 92 sq in | 120 GPM | 4,000 lbs |
| DG18SFB | Black | | | | | |
| SQUARE ATRIUM GRATES | | | | | | |
| 12" | | | | | | |
| DG12SAG | Green | • 12" Square Catch Basins (DB12S2) | 7/16" | 50 sq in | 65 GPM | — |
| DG12SAB | Black | • 12" Low-Profile Basin (DB12SLP) | | | | |
| UNIVERSAL SQUARE FLAT GRATES | | | | | | |
| 7" | | | | | | |
| DG7USG | Green | • 6" Round Catch Basin (DB6R1, DB6R2) | 1/4" | 13 sq in | 11 GPM | 250 lbs |
| DG7USB | Black | • 3" or 4" S & D Pipe (ASTM D2729) | | | | |
| | | • 3" or 4" Triple Wall Pipe | | | | |
| | | • 3", 4", or 6" S & D Fittings (SDR 35) | | | | |
| | | • 3" or 4" Corrugated Pipe | | | | |
| ROUND FLAT GRATES | | | | | | |
| 3" | | | | | | |
| DG3RFG | Green | • 3" S & D Pipe (ASTM D2729) | 3/16" | 3 sq in | 3 GPM | 500 lbs |
| DG3RFB | Black | • 3" Corrugated Pipe | | | | |
| | | • 3" Triple Wall Pipe | | | | |
| | | • 3" S & D Fittings (SDR 35) | | | | |
| 4" | | | | | | |
| DG4RFG | Green | • 4" S & D Pipe (ASTM D2729) | 1/4" | 5 sq in | 6 GPM | 750 lbs |
| | | • 4" Corrugated Pipe | | | | |
| | | • 4" Triple Wall Pipe | | | | |
| | | • 4" S & D Fittings (SDR 35) | | | | |
| 6" | | | | | | |
| DG6RFG | Green | • 6" S & D Pipe (ASTM D2729) | 5/16" | 13 sq in | 16 GPM | 1,000 lbs |
| DG6RFB | Black | • 6" Corrugated Pipe | | | | |
| | | • 6" S & D Fittings (SDR 35) | | | | |
| | | • 6" Round Catch Basin (DB6R1 or DB6R2) | | | | |
| | | • 6" Sewer Pipe (ASTM D3034, SDR 35) | | | | |
| ROUND ATRIUM GRATES | | | | | | |
| 3" | | | | | | |
| DG3RAG | Green | • 3" S & D Pipe (ASTM D2729) | 1/4" | — | 12 GPM | — |
| DG3RAB | Black | • 3" Corrugated Pipe | | | | |
| | | • 3" Triple Wall Pipe | | | | |
| | | • 3" S & D Fittings (SDR 35) | | | | |
| 4" | | | | | | |
| DG4RAG | Green | • 4" S & D Pipe (ASTM D2729) | 5/16" | — | 20 GPM | — |
| DG4RAB | Black | • 4" Corrugated Pipe | | | | |
| | | • 4" Triple Wall Pipe | | | | |
| | | • 4" S & D Fittings (SDR 35) | | | | |
| 6" | | | | | | |
| DG6RAG | Green | • 6" S & D Pipe (ASTM D2729) | 3/8" | — | 36 GPM | — |
| DG6RAB | Black | • 6" Corrugated Pipe | | | | |
| | | • 6" S & D Fittings (SDR 35) | | | | |
| | | • 6" Round Catch Basin (DB6R1 or DB6R2) | | | | |
| | | • 6" Sewer Pipe (ASTM D3034, SDR 35) | | | | |

Drainage Accessories



DRAINAGE POP-UP VALVES



BASIN PLUG



BASIN AND FITTING ADAPTERS



SQUARE BASIN RISERS



DOWNSPOUT ADAPTERS

| Model Number | Color | Use | Connects to |
|-----------------------------------|-------|---|---|
| DRAINAGE POP-UP VALVES | | | |
| DPUV3E | Green | <ul style="list-style-type: none"> • 3" PVC Elbow • Discharges excess water from system | <ul style="list-style-type: none"> • 3" or 4" S & D Pipe (ASTM D2729) • 3" or 4" Corrugated Pipe • 3" or 4" Triple Wall Pipe |
| DPUV4EHUB | Green | <ul style="list-style-type: none"> • 4" PVC Elbow and Adapter • Discharges excess water from system | |
| BASIN PLUG | | | |
| DBAAP | — | <ul style="list-style-type: none"> • Blocks 9", 12" & 18" Square Basin side outlets | — |
| BASIN AND FITTING ADAPTERS | | | |
| DBAA34 | — | <ul style="list-style-type: none"> • 3" and 4" Basin Adapter | Adapts Square Basin outlets, Low-Profile Basin outlets, or Hub Fittings to: <ul style="list-style-type: none"> • S & D Pipe • Corrugated Pipe • Triple Wall Pipe |
| DBAAO34 | — | <ul style="list-style-type: none"> • 3" and 4" Offset Basin Adapter | |
| DBAA6 | — | <ul style="list-style-type: none"> • 6" Basin Adapter | |
| DPAFHA34 | — | <ul style="list-style-type: none"> • 3" and 4" Fitting Adapter | |
| SQUARE BASIN RISERS | | | |
| DBRE9 | — | <ul style="list-style-type: none"> • Extends height of 9" or 12" Square or Low-Profile Basin by 6" | <ul style="list-style-type: none"> • Square or Low-Profile Basins |
| DBRE12 | — | | |
| DOWNSPOUT ADAPTERS | | | |
| DDSA23 | — | <ul style="list-style-type: none"> • Connects downspout to various pipes | <ul style="list-style-type: none"> • 4" PVC • 4" Corrugated Pipe • Most 4" Pipes |
| DDSA34 | — | | |