



Golf Rotors

From the Short to the Long Game,
We Have You Covered.



Peace of Mind Today. Continuous Innovation for the Future.

Rain Bird builds innovation into every rotor with high-efficiency nozzles, industry-leading surge resistance, and the widest range of throw in a single rotor. Trusted by golf course professionals everywhere, Rain Bird® rotors deliver unrivaled performance and uniformity, creating exceptional playability.



Consistent Rotation Speed

The self-adjusting stator automatically modifies flow to control rotation speed, optimizing performance and providing consistency.



Easy Arc Adjustments

Whether you're catering to grow-in or just trying to get more from a limited water supply, Rapid-Adjust Technology allows you to handle simple arc adjustments with the turn of a screw. Memory Arc® retains two part-circle arc settings, so you can shift between full- and part-circle operation in seconds.



Flushing and Porting to Case

Flush-seal design purges debris and helps prevent stuck-up rotor heads. Porting excess water to the case prevents puddling around the head and water waste.

The Industry's Most Reliable Rotors

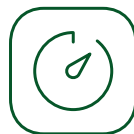


Scan the QR code for full performance charts of all Rain Bird® golf rotors.



Simplicity

Achieve optimal ease of use with a self-adjusting stator, plus save time and money by upgrading to rotors that can be adjusted and maintained without digging.



Performance

Improve playing conditions and get healthy turf with superior distribution uniformity, thanks to a collection of innovations engineered into every head.



Convenience

With 552, 752, and 952 Series rotors, you'll always have the right rotor for your application and the ability to switch between full- and part-circle rotations.



IC System™

Get total control with the Rain Bird IC System. Irrigate precisely where needed with Integrated Control (IC) on every individual rotor, and maintain optimal conditions with minimal effort thanks to revolutionary anytime, anywhere diagnostics.



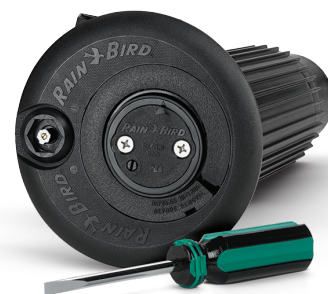
GBS25 Protection

All Rain Bird electric golf rotors feature a robust GBS25 Solenoid. With unmatched 25kV surge protection, built-in filtration for an extra level of defense against debris, and captured plunger, it eliminates the most common maintenance tasks that plague competing rotors.



Top-Serviceability

Designed to save your staff time, Rain Bird rotors offer top-serviceable arc adjustment and pressure regulation as well as easy access to the internal components.



Rapid-Adjust Technology Featuring Memory Arc®



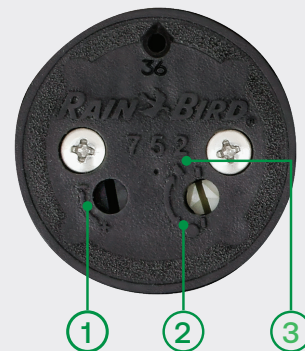
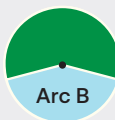
Step 1
Set primary rotor arc.



Step 2
Turn the Full/Part Adjustment Screw for full-circle operation.



Step 3
Turn the rotor to either Arc A or Arc B setting, then set to part-circle. No need to reset the arc when changing between full- and part-circle settings.



Rain Bird® 552 Block Rotors

Small-area control with big-time precision and reliability.

Rotors are engineered to efficiently and precisely irrigate tee boxes and other small areas.

Radius	33' to 55' (10.1m to 16.8m)
Flow Rate	6.80 to 14gpm (0.43 to 0.88 l/s); (1.54 to 3.18m ³ /h)



Rain Bird® 702/752 Series

Dependable coverage throughout your course.

702/752 Series rotors provide unmatched flexibility with industry-leading uniformity, consistent rotation speed, and turn-of-a-screw adjustments. Choose 702 rotors for full-circle applications and 752 rotors for either full- or part-circle applications.

Models

702E: Full-circle electric

702IC: Full-circle IC

702B: Full-circle block

752E: Full/part-circle electric

752IC: Full/part-circle IC

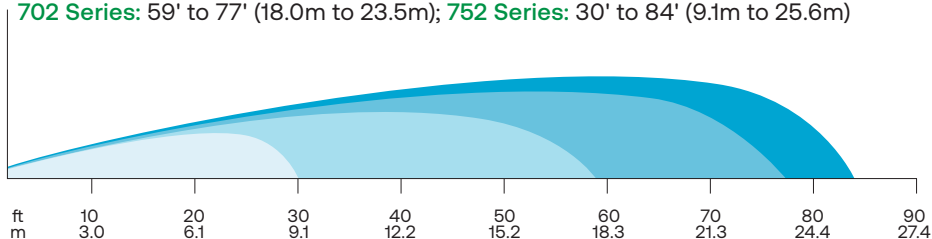
752B: Full/part-circle block

Specifications

Specifications	702 Series	752 Series
Radius	59' to 77' (18.0m to 23.5m)	30' to 84' (9.1m to 25.6m)
Flow Rate	16.9 to 42.9gpm (1.06 to 2.70l/s); (3.83 to 9.73m ³ /h)	6.8 to 47gpm (0.43 to 2.97l/s); (1.54 to 10.68m ³ /h)
Arc	Full-circle 360°	Full-circle 360°, Adjustable from 30° to 345°
Body Height	Models E, IC: 12.0" (30.5cm) Model B: 9.6" (24.5cm)	Models E, IC: 12.0" (30.5cm) Model B: 9.6" (24.5cm)
Pop-Up Height	2.6" (6.6cm)	2.6" (6.6cm)
Top Diameter	Models E, IC: 6.25" (15.9cm) Model B: 4.25" (10.8cm)	Models E, IC: 6.25" (15.9cm) Model B: 4.25" (10.8cm)
Top-Serviceable Internal Components	Yes	Yes
Key Technologies	Self-Adjusting Stator, Enhanced Rock Screen and Sod Cup	Self-Adjusting Stator, Low-Angle Nozzle Housing, Enhanced Rock Screen and Sod Cup



702 Series: 59' to 77' (18.0m to 23.5m); **752 Series:** 30' to 84' (9.1m to 25.6m)



Rain Bird® 952 Series

Go further. Stress less.

952 Series rotors offer full- and part-circle capabilities, an extended throw radius, and high-performance nozzles for efficient and uniform coverage of large areas. Together, these advantages result in optimal playing conditions across your entire course. With greater rotor versatility and additional internal improvements, the 952 Series rotors provide improved ease of use and reduced maintenance costs.



Specifications

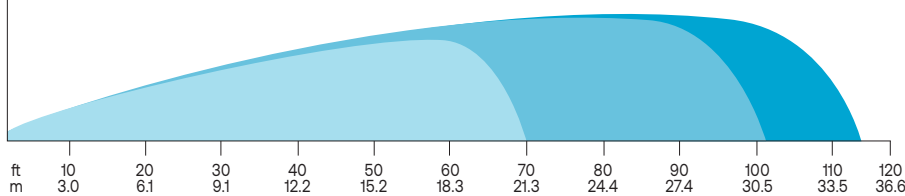
	952 Series	952LT Series
Radius	70' to 101' (21.3m to 30.8m)	98' - 115' (29.9m - 35.1m)
Flow Rate	19.7 to 54.5gpm (1.24 to 3.44l/s); (4.5 to 12.4m ³ /h)	58 to 68 gpm (3.66 to 4.29 l/s); (13.2 to 15.4 m ³ /h)
Arc	Full-circle 360°, adjustable 30° to 345°	Full-circle 360°, Adjustable 30° to 345°
Body Height	13.4" (34.0cm)	12.6" (32.0 cm)
Pop-Up Height	2.6" (6.6cm)	3.6" (9.1 cm)
Top Diameter	7" (17.8cm)	5.25" (13.3 cm)
Top-Serviceable Internal Components	Yes	Yes
Key Technologies	Self-Adjusting Stator, Low-Angle Nozzle Housing, Enhanced Rock Screen	Stator Plate, Low-Angle Nozzle Housing, and Sod Cup
Models	Electric, IC, SAM	Block

Models

- 952E:** Full/part-circle electric
- 952IC:** Full/part-circle IC
- 952SAM:** Full/part-circle Stopamatic
- 952LT:** Full/part-circle block



952 Series: 70' to 101' (21.3m to 30.8m); **952LT Series:** 98' to 115' (29.9m to 35.1m)



The Rotor That Drives for Distance

The new 952LT (Long Throw) block rotor delivers up to 115 feet (35.1 meters) of radius: the longest throw in our lineup. It's ideal for large spaces and can also improve playability by minimizing the number of rotors within large greens. A unique nozzle design ensures great coverage, even in windy conditions. And like all 952 Series rotors, the new 952LT rotor has full- and part-circle capabilities, plus rugged internals for the dependable performance you expect.

New

952LT Rotor



Stronger Together: The Rain Bird Ecosystem Advantage

CIRRUSPRO™

The Ultimate Evolution of Irrigation Control

Your course's irrigation has always been in your hands. Now it literally is. Step up to the ultimate central control experience with CirrusPRO™. It's the advanced irrigation control system that gives you the power to adjust settings from any smart device. This means you can make updates right from the system's map and watch them happen in real time.



More Freedom

Every system feature and all course data can be accessed from anywhere, on any smart device, with just one app. Add unlimited users, choose from multiple languages, select which map layers are visible, and more.

Better Data

CirrusPRO actively monitors course conditions with APIs and widgets like Weather Forecast and Rain Watch™ and notifies you when there's a potential issue. You can access up-to-the-minute information directly from the system's map.

Complete Control

Water by seconds, ET, rotation, or application. Irrigate by precise measurements, with no need to manually calculate runtime based on precipitation rate. You can also set up auto responses for when conditions change unexpectedly.

See the benefits of pairing your Rain Bird rotors with a mobile-first irrigation control system at RainBird.com/CirrusPRO.



Rain Bird Corporation
970 West Sierra Madre
Azusa, CA 91702
Phone: (626) 812-3400
Fax: (626) 812-3411

Rain Bird Technical Services
866-GSP-XPRT (866-477-9778)
(U.S. and Canada)

Rain Bird Corporation
6991 East Southpoint Road
Tucson, AZ 85756
Phone: (520) 741-6100
Fax: (520) 741-6117

Specification Hotline
(800) 458-3005 (U.S. and
Canada)

Rain Bird International, Inc.
1000 West Sierra Madre Ave.
Azusa, CA 91702
Phone: (626) 963-9311
Fax: (626) 852-7343

rainbird.com/golf

Follow us @RainBirdGolf