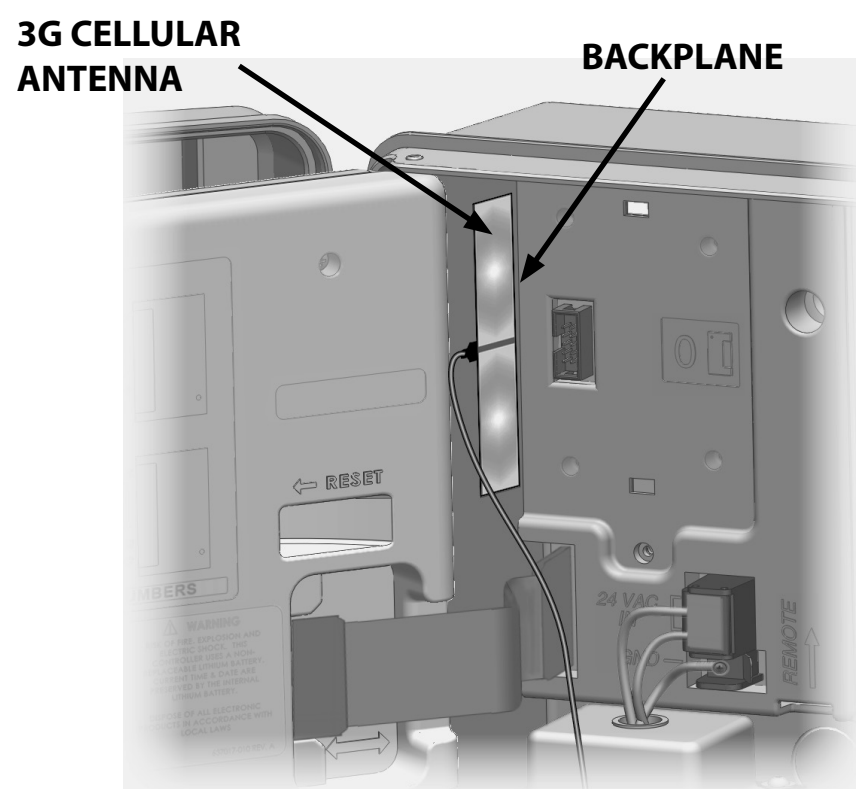


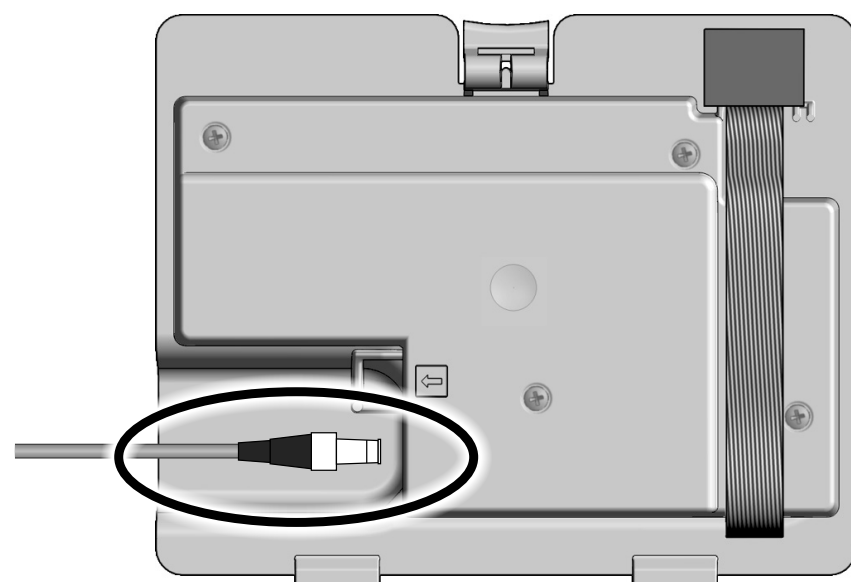
1 Install Internal Cellular Antenna

- (Plastic case cabinet only)



2 Cellular Antenna Connection

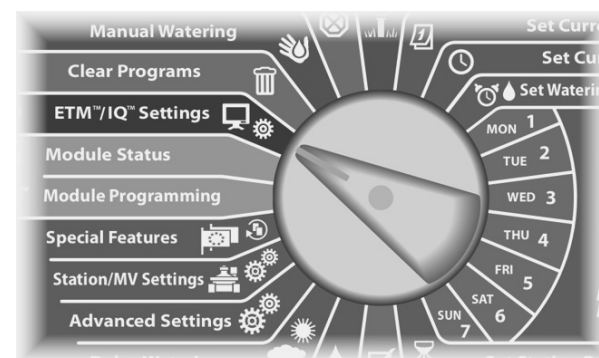
- IQEXTANTGP external cellular antenna required for metal cabinets



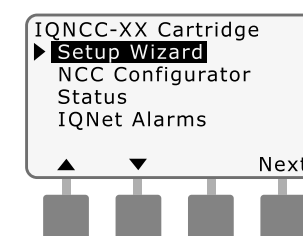
3 Configure Cartridge

- See User-manual for Server/Client Configurations

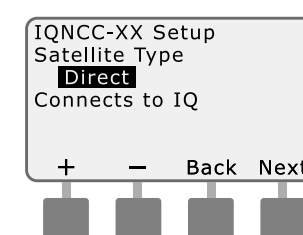
- ▶ Turn the controller dial to ETM/IQ Settings



- ① The IQ Settings main menu is displayed. Use the UP or DOWN arrows to select Setup Wizard; press Next.



- ② The Setup - Satellite Type screen is displayed. Use + or - to select Direct; press Next.



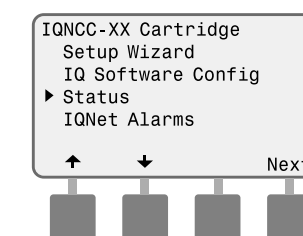
4 Verify Cellular Connections

- IQ port status should be IDLE

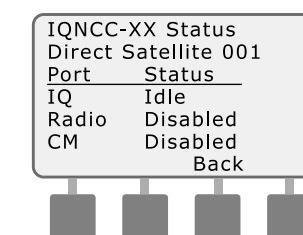


NOTE:
Cellular connection may take 10 minutes or more.

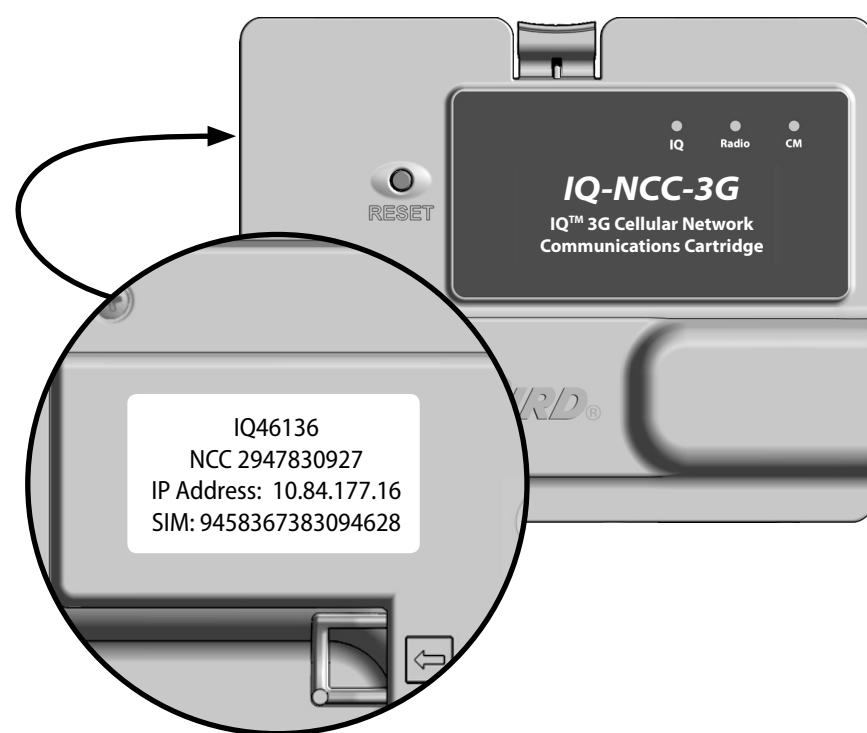
- ① The IQ Settings main menu is displayed. Use the UP or DOWN arrows to select Status; press Next.



- ② The Satellite Status screen is displayed. Current status of IQ, Radio and CM ports are shown.



5 Get IP Address from the Sticker on the Back of the Cartridge



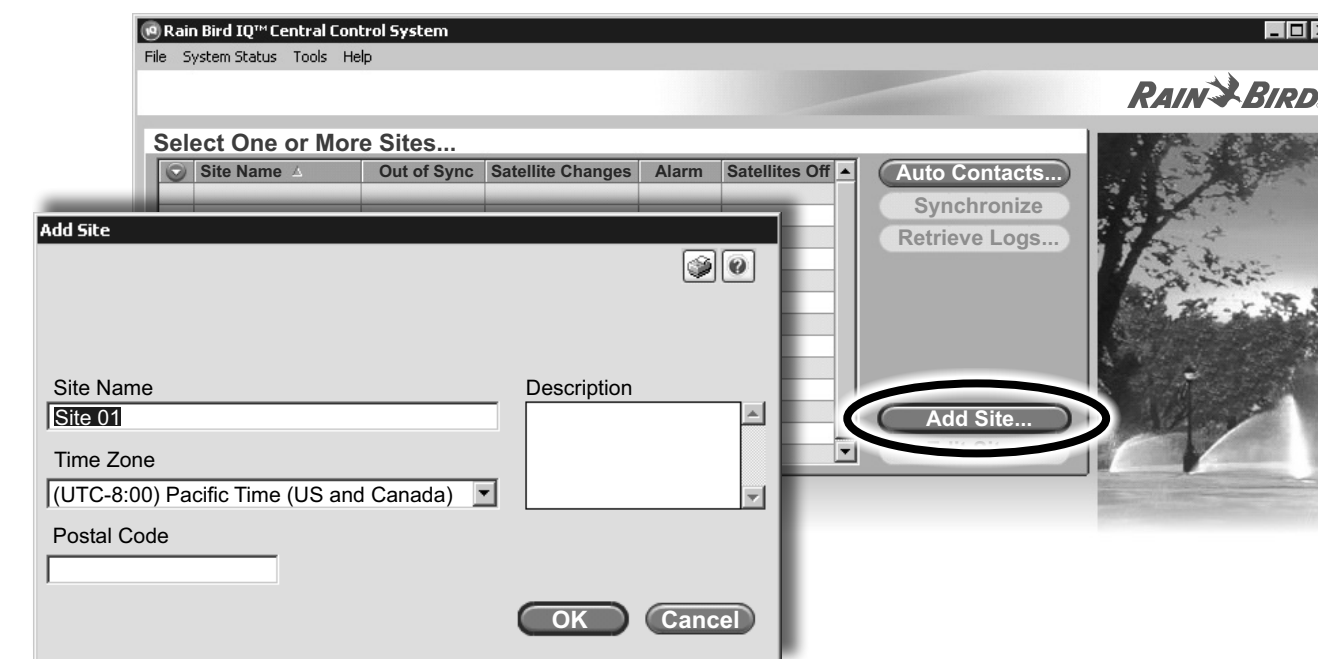
6 Go to www.rainbird.com/iq

- ① New users: Select [IQ-Cloud Sign-up](#).
- ② Existing users: Select [IQ-Cloud Login](#).



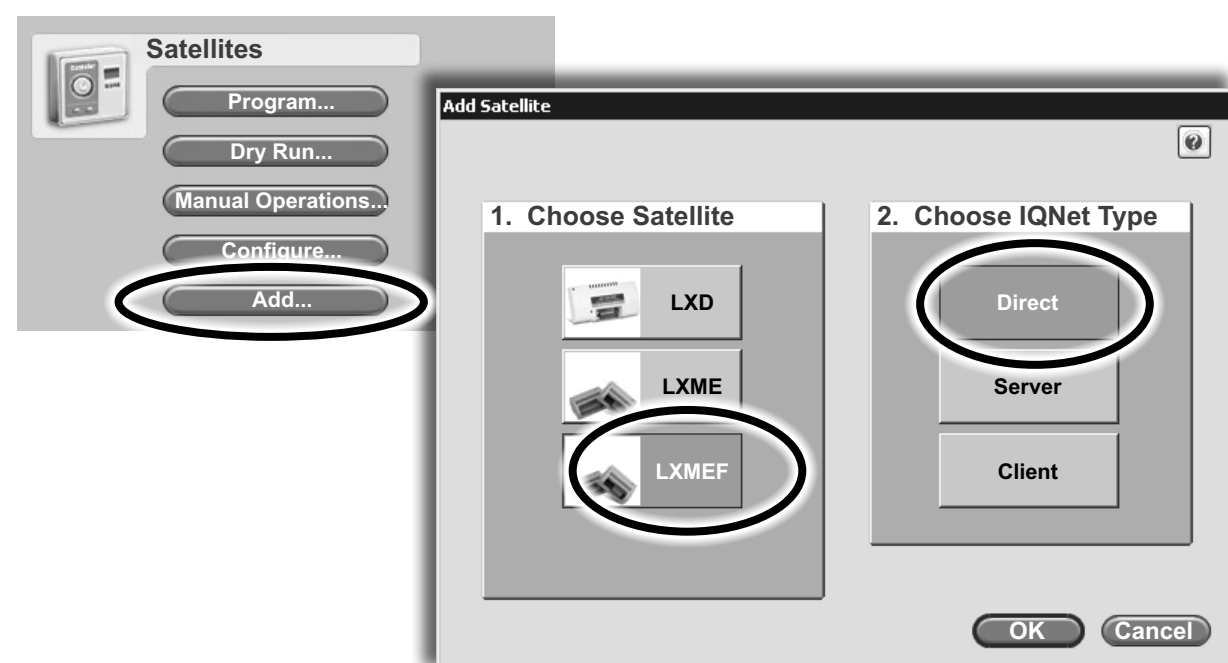
- ③ Select [Configure this computer](#) for first time IQ-Cloud connection on a new computer.
- ④ Enter [User Name & Password](#) to Logon to IQ-Cloud.

7 Select Add Site



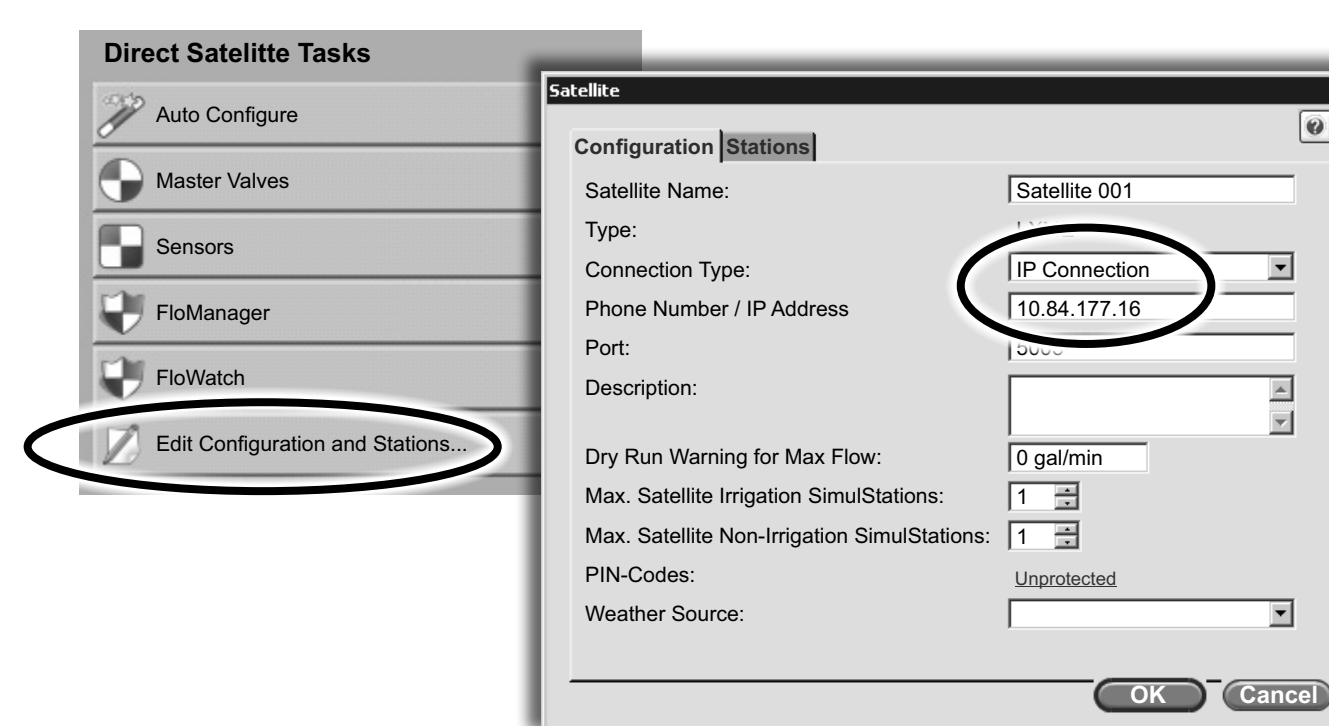
8 Select Add Satellite

- ① Choose [ESP-LX Controller Type](#).
- ② Select [Direct IQNet Type](#).



9 Select Configuration and Stations

- ① Select [IP Connection type](#).
- ② Enter [IP Address](#) from cartridge sticker.



10 Reverse Sync Data from Controller

- ① Select [Auto Configure](#).
- ② Check [All Options](#).

