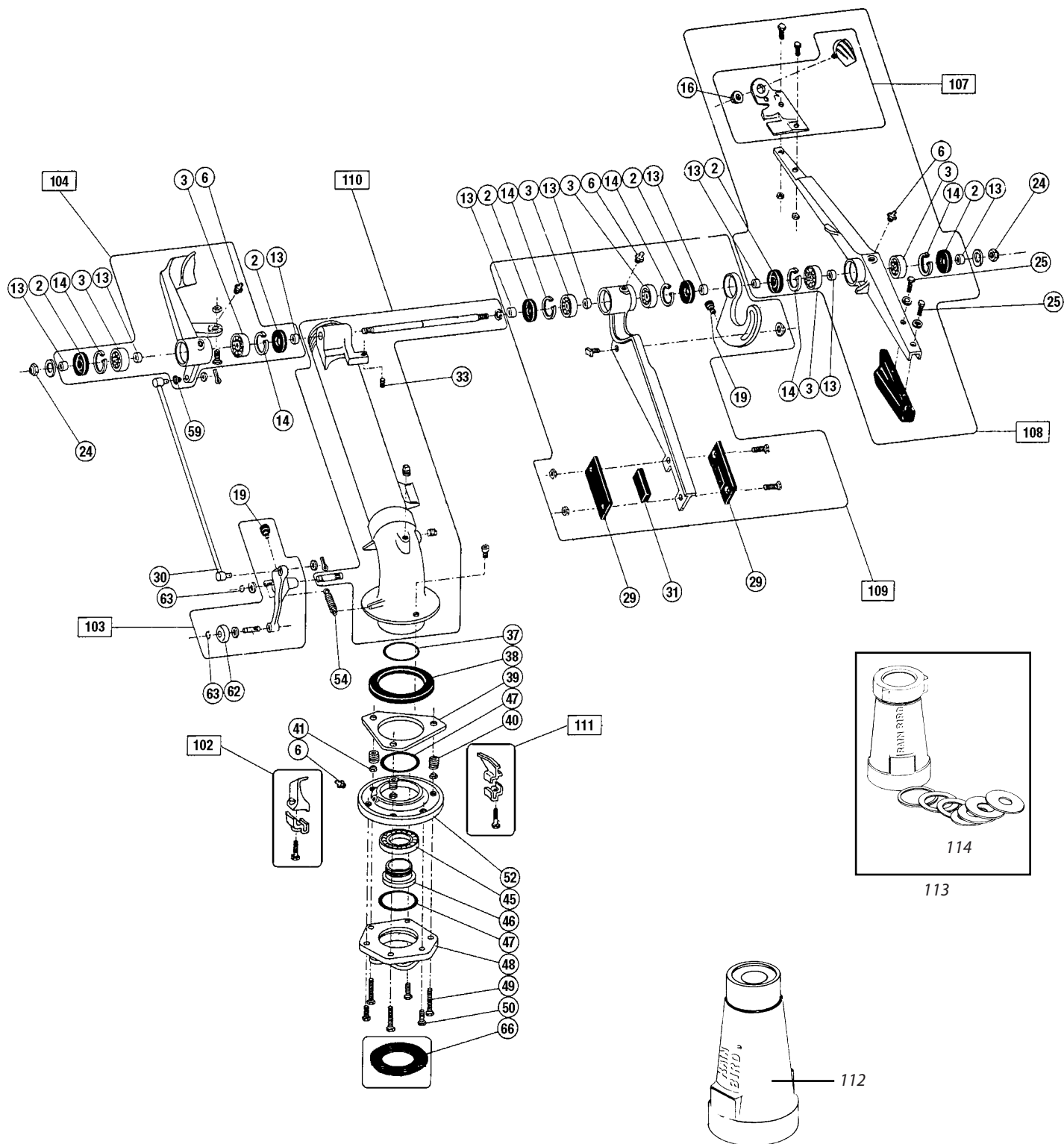


105C / 1005C - GREEN COUNTERWEIGHTS

1005M / 1005M-DC - BLACK COUNTERWEIGHTS



Note: Part numbers enclosed in brackets () are not available individually, but may be sold in assemblies or kits.

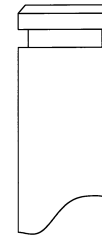


Ref.	Part Description	105C/1005C	1005M	1005M-DC
2	Grease Seal	72-101572	72-101572	72-101572
3	Ball Bearing	71-101573	71-101573	71-101573
5	Nut	72-100535	-	-
6	Grease Fitting	71-100022	71-100022	71-100022
13	Spacer	71-101531	71-101531	71-101531
14	Snap Ring	72-101529	72-101529	72-101529
16	Lock Nut	72-101329	71-P00326	71-P00326
19	Bumper	71-P00337	71-P00337	71-P00337
24	Nut	72-101569	71-P00655	71-P00655
25	Screw	72-104569	71-P00330	71-P00330
27	Drive Arm Counterweight	-	71-P00510	71-P00510
29	Pendulum Weight	71-101458	71-101458	71-101458
30	Reverse Rod	71-102181	71-102181	71-110391
31	Bumper Pad	71-100943	71-100943	71-100943
33	Arm position Screw	72-109534	71-P00524	71-P00524
37	Thread O-Ring	71-102158	71-102158	71-102158
38	Brake Lining	71-102150	71-102150	71-102150
39	Disc Brake	71-108956	71-108956	71-108956
40	Brake Spring	71-101523	71-101523	71-101523
41	Brake Adjust Nut	72-101533	71-P00326	71-P00326
45	Ball Bearing	71-102153	71-102153	71-102153
46	Lock Nut	71-102157	71-102157	71-102157
47	Bearing O-Ring	71-102155	71-102155	71-102155
48	Bearing Sleeve	71-102156	71-102156	71-102156
49	Brake Bolt	72-101522	71-P00329	71-P00329
50	Screw	72-104569	71-P00330	71-P00330
52	Bearing Cap Assembly with 3 Bolts/Nuts	71-P00728	71-P00350	71-P00350
54	Reverse Trip Spring	71-102182	71-102182	71-102182
56	Bolt	72-104569	-	-
59	Reverse Arm Bushing Flange	71-102172	71-102172	71-102172
62	Trip Lever Roller	71-101527	71-101527	71-101527
63	Snap Ring	72-P00656	71-P00656	71-P00656
63A	Snap Ring*	71-101526	72-101526	71-P101526
66	Flange Gasket	72-102186	71-102186	71-102186
102	Forward Trip Stop Assembly	71-P00653	71-P00653	71-P00653
103	Trip Lever Assembly	71-P00652	71-P00652	71-P00652
104	Reverse Arm Assembly	71-P00651	71-P00651	71-P00651
107	Spoon Bracket Assembly	71-P00518	71-P00518	71-P00518
108	Drive Arm Assembly	71-P00149	71-P00149	71-P00149
109	Pendulum Assembly	71-P00517	71-P00517	71-P00517
110	Elbow Range Tube Assembly	71-P00148	71-P00148	71-P00679
111	Reverse Trip Stop Assembly	71-P00654	71-P00654	71-P00654
NOZZLES (Specify nozzle size when ordering)				
112	CS Straight Bore Nozzle	71-102189	71-102189	71-102189
113	CO Ring Orifice Nozzle Assembly	71-102138	71-102138	-
114	Ring Orifice Set Only	71-103868	71-103868	-

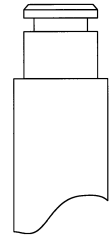
* See Ref. No. 1000

IMPORTANT

Before ordering Ref. 63, carefully examine the part on which it will be used: the elbow shaft or the roller shaft.



If the shaft looks like this, order Ref. 63A: 72-101526



If the shaft looks like this, order Ref. 63: 71-P00656

Note: Part numbers enclosed in brackets () are not available individually, but may be sold in assemblies or kits.