

Introduction

A universal ethernet-to-wireless adapter can be used to connect an IQ Ethernet Cartridge (NCC-EN) to a wireless network. This eliminates the need for a controller to be physically connected to a router for communication with the IQ computer.

NOTE: Port Forwarding must be configured on the router before adapter installation. Refer to the **IQ™ Central Control System Port Forwarding Instructions** document.

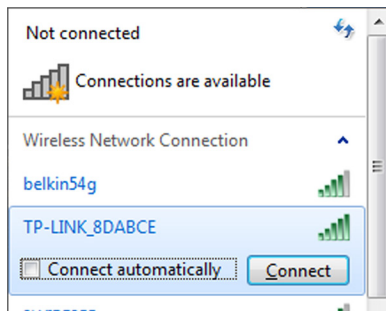
The following information is required for setup:

- SSID of existing network
- Network passphrase

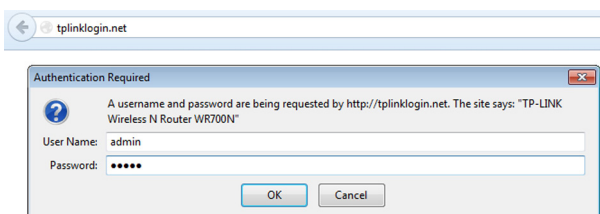
TP-Link WR700N Setup

1. Plug the adapter in to a power outlet and wait until the LED is solid blue.
2. Go to the wireless network setup utility on your computer. Disconnect the active wireless connection, and connect to the TP-Link. (Use the SSID and password for the adapter listed pocket card included in the box.)

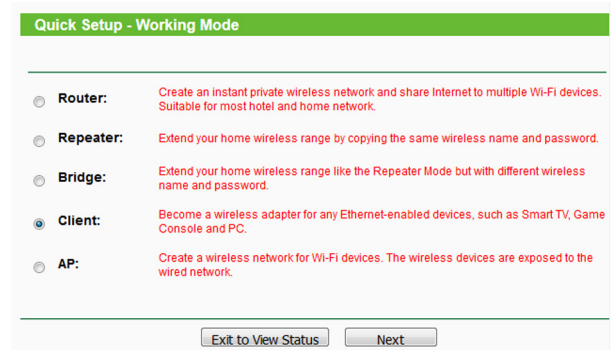
NOTE: The wireless network setup varies depending on your version of operating system and router brand. Below is an example of a typical Windows wireless utility.



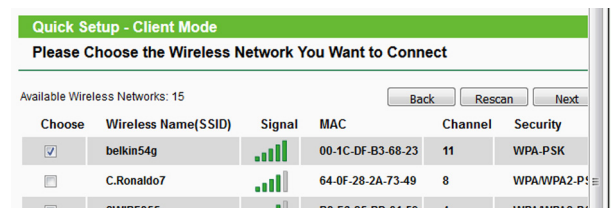
3. Open an internet browser and go to **http://tplinklogin.net**.
4. Enter "admin" for both username and password.



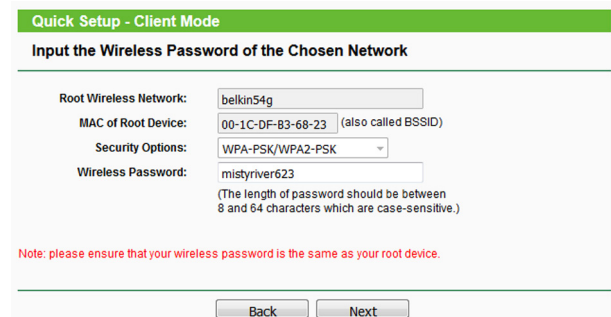
5. Select the Client mode and select Next.



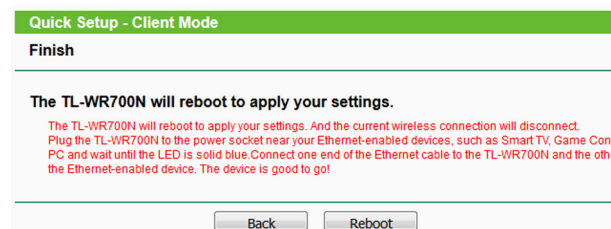
6. From the list of available networks, select the check box for your SSID and select Next.



7. Enter the password for your network and select Next.



8. Select Reboot to reboot the adapter.



9. Disconnect the Ethernet cable from the computer and the adapter.
10. At the controller, disconnect the NCC-EN cartridge Ethernet cable from the router, and connect it to the adapter.
11. The adapter will automatically connect to the wireless network.
12. Re-enable your internet connection to the computer.