

Maxicom² Central Control

The best central control in the business just got even better.

How do you improve on the industry's most powerful, most trusted multi-site Central Control system? You make it more robust, more versatile and even easier to use. Introducing the innovative Maxicom²® Version 4.2.

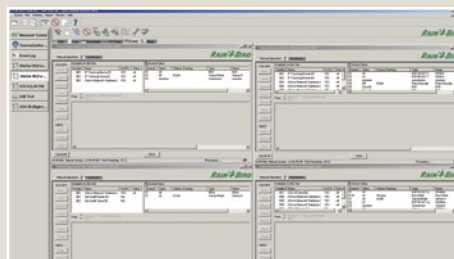
Combining advanced performance with enhanced usability, Version 4.2 brings The Intelligent Use of Water™ to life yet again. With more features, fresh styling and an intuitive user interface, Version 4.2 makes conserving water simpler. Navigate menus, schedule irrigation and meet diverse landscape requirements quickly and easily.



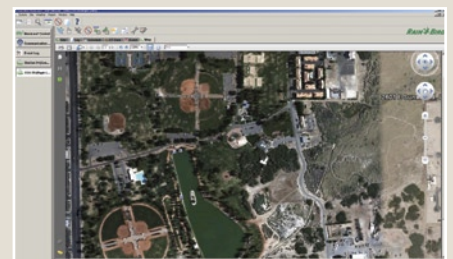
Just a few of the ways Maxicom² raises the bar—again.



- Flow zones and individual stations can now be assigned background colors for increased readability.



- Up to four manual operation dialog boxes can be opened simultaneously.

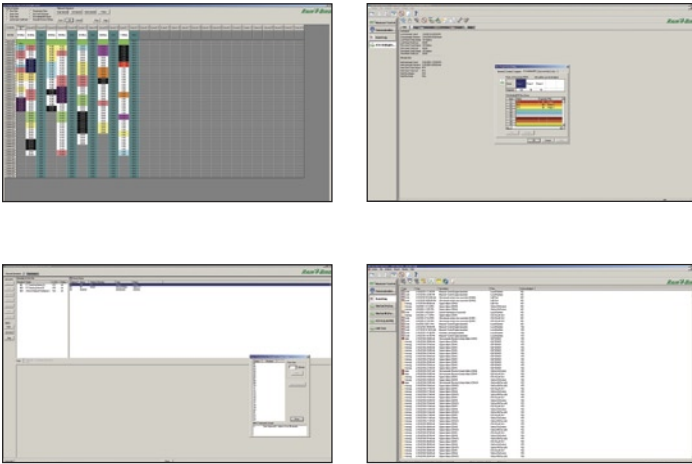


- Map view capabilities now include support for JPG and PDF files.



The legend continues.

Beneath the streamlined interface of Version 4.2 lies even more of the power and flexibility that established Maxicom²® as the premier central control for large commercial end-users. The first system to deliver innovative features like Cycle+Soak™ and Flo-Manager®, Maxicom² made saving water easy. And with more advanced functionality and an intuitive design, it just became even easier.



System Features

- The Maxicom² Central Controller Package includes Maxicom² software, pre-configured computer, Global Support Plan (GSP) and training.
- Maxicom² Version 4.2 will run on Windows XP or Windows 7, including Windows 7 (32-bit) Home Premium, Professional, and Ultimate.
- Control hundreds of ESP-SITE-SAT Satellites (single controller sites) and Cluster Control Units (CCUs) which can each control up to 28 individual ESP-SAT Satellite Controllers on multi-controller sites.
- Monitor dozens of weather sources, including WSPRO2 Weather Stations, ET Managers or rain counting sensors (Raingauge).
- Freedom Remote Control allows manual operation of system through a cellular phone or radio.
- Multiple log and water usage reports are generated automatically to track system operation and water savings.

Water Management Features

- Maximize water efficiency by precisely watering diverse areas and microclimates with cross-satellite schedule operation.
- ET Checkbook™ manages Evapotranspiration (ET) and automatically adjusts Satellite Controller station run-time or day cycle intervals to match the landscape's water requirements.
- Flo-Manager manages the total flow demand placed on the water source(s), optimizing both the available water and watering window.
- Flo-Watch™ monitors flow sensors at each water source, records flow and automatically reacts to problem flows by shutting down the affected individual valve or mainline.
- RainWatch™ monitors rain counting sensors, records rainfall and automatically reacts to rainfall by interrupting irrigation, measuring rainfall and determining whether irrigation should be resumed or canceled.

Learn more about Maxicom² Version 4.2 at www.rainbird.com/maxicom2 or by contacting your Rain Bird sales representative.

D40177

