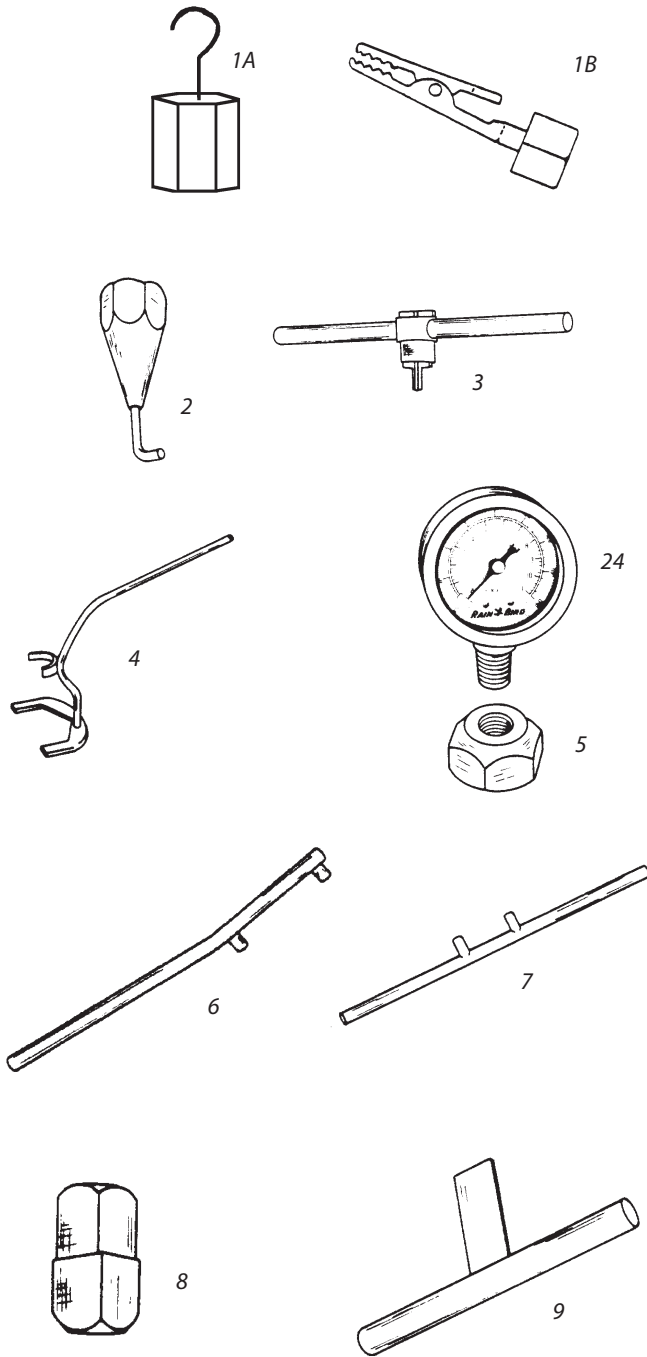
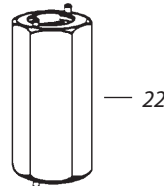
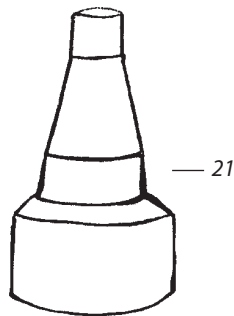
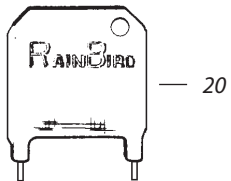
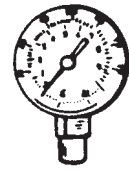
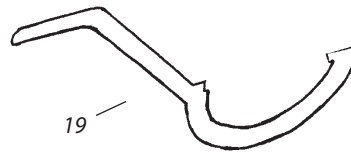
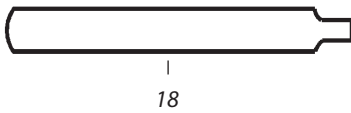
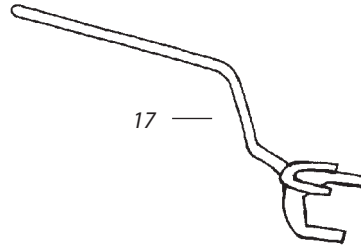
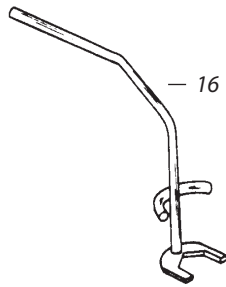
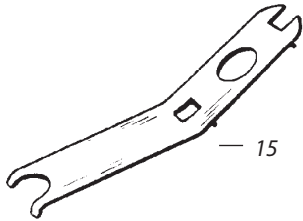
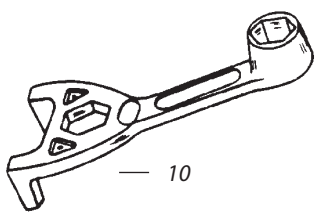


ACCESSORIES - TOOLS



Ref.	Description	Part Number
1A	41000, Arm Weight, 21/31	(A90900)
1A	41008, Arm Weight, 29B/30/35	A90908
1B	41009, Arm Weight, 37, 5055	(A90909)
1A	41010, Arm Weight, 41-51	(A90910)
1A	41011, Arm Weight, 6060	(A90911)
1B	41015, Arm Weight, 4045	(A90915)
2	41017, Pitot Tube	A90917
3	41019, Universal Bearing Wrench	A90919
4	41045, Installation Wrench, 15111B	A98090
5	41052, Silcock Adaptor	A90952
1B	41054, Arm Weight, 27	(A90954)
6	42001, Spanner Wrench, 21-51	B41801
7	42005, Body Wrench, 21-51	B41805
8	42006, Bearing Nipple Wrench, 21-51	B41806
9	42021, Bearing Nipple Wrench, 81-87	(B41821)
10	42036, WR-15C Wrench, 2600/2800	B41836
1B	42038, Arm Weight, 47/81/87	(B41838)
11	42048, Adaptor Handle	B41848
12	42049, Sytle P Driver	B41849
13	42050, Sytle H Driver	B41850
14	42052, Key, 131/171	B41852
15	42055, WR-16 Wrench, 1600	B41855
16	42064, Installation Wrench, Mini-Paw	B41866
17	42066, Installation Wrench, 40-60	(B41870)
18	42067, Bearing Nipple Wrench, 40-60	B41860
-	42068, Bearing Nipple Wrench, 91/95	(D02205)
-	42069, Body Wrench, 91/95	(D02200)
19	42070, Spanner Wrench, R-70	A49100
20	42071, Nozzle Wrench, R-70	D23310
21	42072, Cover Removal Tool, R-70	B41880
22	46000, Solenoid Wrench	B33003
-	DR-SVK-18", Selector Valve Key	D02221
-	DR-SVK-7", Selector Valve Key	D02215
-	DR-VSIT Seat Insert Tool, DR Series	(D02235)
-	DR-VSRT Seat Removal Tool, DR Series	D02245
-	HUT, Hold Up Tool, 47/51DR	(D02201)
-	HUT, Hold Up Tool, 91/95DR	(D02204)
23	PHG, Pressure Hose & Gage	B33004
24	RBG, Liquid Field Pressure Gauges	D22810
-	SAK-2, System Analysis Kit	A50000
-	Snap Ring Pliers 900/950	D02203
-	Snap Ring Pliers 500/550 700/750	D02236
-	Valve Insertion Tool 500/550 700/750	B41710
-	Valve Insertion Tool 900/950	B41700
-	Selector Service Tool/Key - EAGLE/DR (Orange Tool)	B41720
-	Installation Socket for Top Serviceable Rock Screen	D02237

Note: Part numbers enclosed in brackets () are not available individually, but may be sold in assemblies or kits.



Note: Part numbers enclosed in brackets () are not available individually, but may be sold in assemblies or kits.