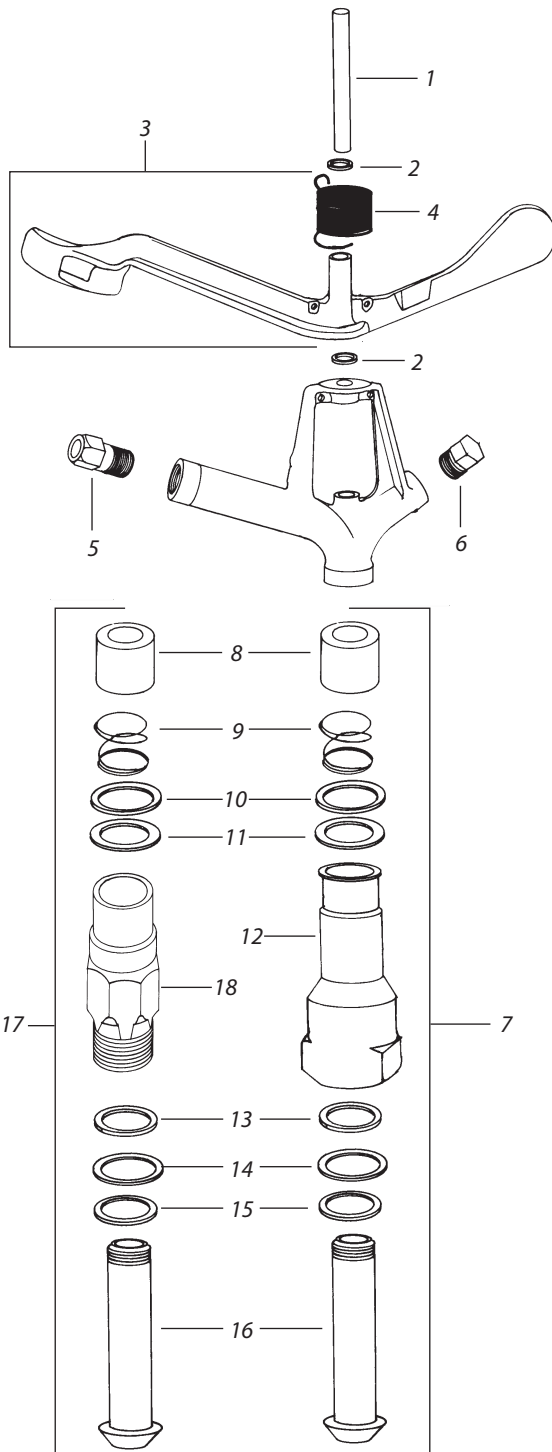


70EH / 70 E TNT / 70EWH / 70EW TNT / 70ESPH  
70ESP TNT / 70CWH / 70CW TNT / 70CSPH / 70CSP TNT



| Ref.   | Part Description                        | 70EWH     | 70CWH     |           |
|--|---|-----------|-----------|-----------|
|  |   | 70EW TNT  | 70CW TNT  |           |
|  | 70EH                                    | 70ESPH    | 70CSPH    |           |
|  | 70E TNT                                 | 70ESP TNT | 70CSP TNT |           |
| <b>UPPER ASSEMBLY</b>                              |   |           |           |           |
| 1  | Fulcrum Pin                             | 100348    | 100348    | 100348    |
| 2  | Arm Washer (2)                          | 100163    | 100163    | 100163    |
| 3  | Arm Spring Assembly (A)                 | -         | 105879    | 105879    |
| 4  | Arm Spring                              | 100369    | 100369    | 100369    |
| <b>NOZZLES (Specify nozzle size when ordering)</b> |   |           |           |           |
| 5  | Straight Bore                           | 100382    | 100382    | 100382    |
| 6  | Plug                                    | -         | 100417    | 100417    |
| -  | Bushing                                 | -         | 100418    | 100418    |
| -  | 20 Degree Spreader Nozzle               | -         | 100226-08 | 100226-08 |
| -  | Spreader Nozzle Assembly                | (100407)  | -         | -         |
| -  | Body Vane                               | 100695    | 100695    | 100695    |
| <b>BEARING ASSEMBLY</b>                            |   |           |           |           |
| 7  | Bearing Assy (Female H Style)(NPT Assy) | 104041    | 104041    | 104041    |
| 8  | Bearing Hood                            | 103119    | 103119    | 103119    |
| 9  | Bearing Spring                          | 100620    | 100620    | 100620    |
| 10   | Metal Top Seal Washer                   | 100312    | 100312    | 100312    |
| 11   | Top Seal Washer (White)                 | 103115    | 103115    | 103115    |
| 12   | Bearing Sleeve (NPT)                    | 105907    | 104040    | 104040    |
| 13   | Bearing Washer (Black)                  | 104038    | 104038    | 104038    |
| 14   | Wear Washer (Orange)                    | 104037    | 104037    | 104037    |
| 15   | Bearing Washer (Black)                  | 104038    | 104038    | 104038    |
| 16   | Bearing Nipple                          | 100390    | 100390    | 100390    |
| 17   | Bearing Assy (Male H Style)(NPT Assy)   | 108726    | 108726    | 108726    |
| 8  | Bearing Hood                            | 103119    | 103119    | 103119    |
| 9  | Bearing Spring                          | 100620    | 100620    | 100620    |
| 10   | Metal Top Seal Washer                   | 100312    | 100312    | 100312    |
| 11   | Top Seal Washer (White)                 | 103115    | 103115    | 103115    |
| 18   | Bearing Sleeve                          | (108725)  | (108725)  | (108725)  |
| 13   | Bearing Washer (Black)                  | 104038    | 104038    | 104038    |
| 14   | Wear Washer (Orange)                    | 104037    | 104037    | 104037    |
| 15   | Bearing Washer (Black)                  | 104038    | 104038    | 104038    |
| 16   | Bearing Nipple                          | 100390    | 100390    | 100390    |
| -  | Bearing Assy (Male or Female TNT Style) |           |           |           |
| 8  | Bearing Hood                            | 103119    | 103119    | 103119    |
| 9  | Bearing Spring                          | 100620    | 100620    | 100620    |
| 10   | Metal Top Seal Washer                   | 100312    | 100312    | 100312    |
| 11   | Top Seal Washer (Black)                 | 103115    | 103115    | 103115    |
| 12\18  | Bearing Sleeve                          | (B)       | (B)       | (B)       |
| 13   | Wearing Ring (T-Ring)(Orange)           | 100389    | 100389    | 100389    |
| 14   | Bearing Seal Washer (Black)             | 101323    | 101323    | 101323    |
| 15   | Wear Washer (Black)                     | 104038    | 104038    | 104038    |
| 16   | Bearing Nipple                          | 100390    | 100390    | 100390    |

(A) Old style 70E arm is not available. Only replacement is 70EW arm spring # (102562).

(B) When replacing older TNT style bearing sleeve use MALE

H bearing assembly

P/N 108726, or use FEMALE H bearing sleeve P/N 104040(NPT) or (104070)(BSP).

With H bearing sleeve also install 2 washers P/N 104038 and 1 washer P/N 104037.

Call Ag customer service to order parts at 1-800-435-5624.

Note: Part numbers enclosed in brackets ( ) are not available individually, but may be sold in assemblies or kits.