

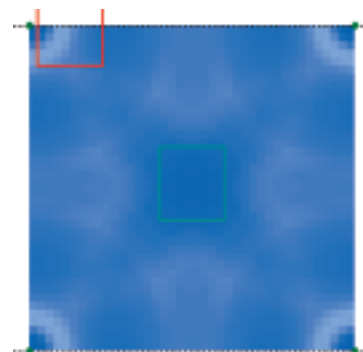


## LF™ Series Sprinkler Quick Reference Fruit Cooling, 39' x 39' Rectangular

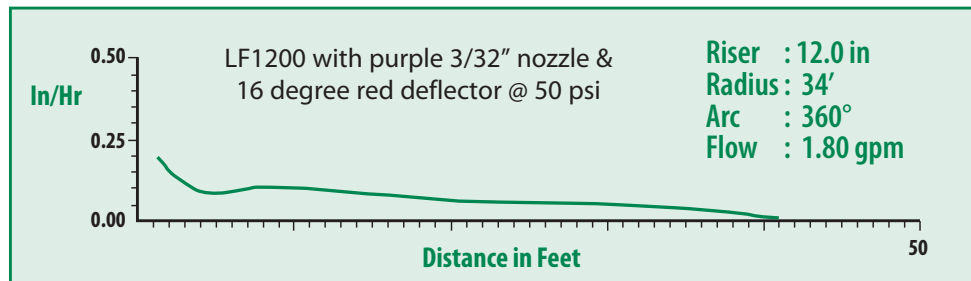
Fruit Growers understand that competition in a world market requires the adoption of new technologies and growing practices in order to achieve the superior fruit quality that commands the highest prices wherever the fruit is sold. The new LF™ Series sprinkler from Rain Bird is a cost effective irrigation device suitable for use whenever an overhead sprinkler system is designed for evaporative cooling (EC). When designed utilizing a time-pulsed application rate between 40 gpm/acre and 80 gpm/acre, EC has proven to be an effective technique to reduce sun burn and/or to enhance color development on red or red striped fruit.

The broad nozzle selection offered for the LF™ Series sprinkler provides growers the ability to achieve the design application rate regardless of spacing. Specially engineered deflectors, available in several trajectories, deliver water droplets ideally sized to fight the wind and penetrate the canopy and ensure wetting of all fruit surfaces. The unique, patented, bearing provides excellent wear resistance to the harsh, gritty, waters commonly utilized in agricultural irrigation. If you are working to grow excellent fruit, as opposed to good fruit, try the LF™ Series sprinkler from Rain Bird, the company that has proudly served the agricultural community since 1933.

SPACE PRO™ Densogram



DU = 91%, CU = 93%  
5%SC = 1.1, AR = .11"/hr



For additional information on the world's most uniform sprinkler, contact your Rain Bird Dealer or visit [www.rainbird.com](http://www.rainbird.com)

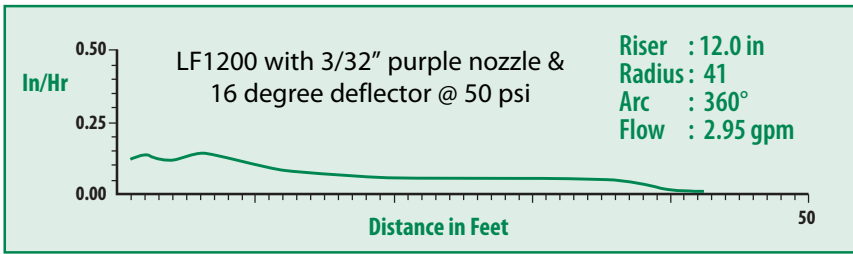
Performance for alternate spacings available via Rain Bird's Uniformity Pro™ @ [www.rainbird.com](http://www.rainbird.com)



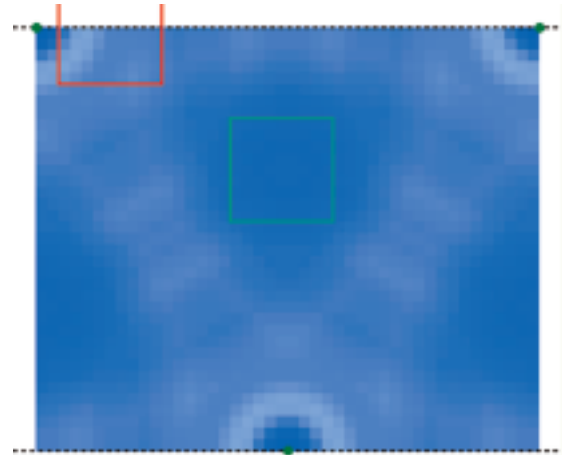
**Rain Bird® LF™ Series Sprinklers**  
"Uniformity Rivalled only by Rain"



## 42' x 36' Triangular

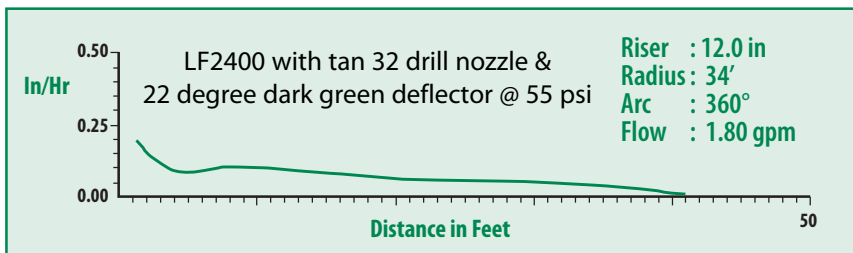


SPACE PRO™ Densogram

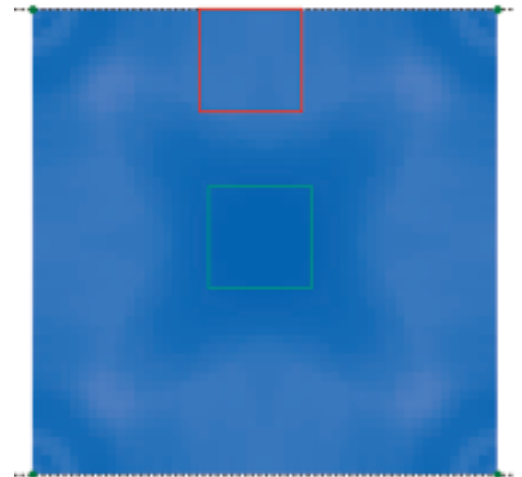


DU = 87%, CU = 90%,  
5%SC = 1.2, AR = .11"/hr

## 48' x 48' Rectangular



SPACE PRO™ Densogram



DU = 90%, CU = 90%,  
5%SC = 1.1, AR = .12"/hr

### The Intelligent Use of Water™

At Rain Bird, we believe it is our responsibility to develop products and technologies that use water efficiently. Our commitment also extends to education, training and services for our industry and our communities.

The need to conserve water has never been greater. We want to do even more, and with your help, we can. Visit [www.rainbird.com](http://www.rainbird.com) for more information about The Intelligent Use of Water.™